



THE METROPOLITAN WATER DISTRICT
OF SOUTHERN CALIFORNIA

Date: November 25, 2019
To: Board of Directors
From: Jeff Kightlinger, General Manager
Subject: Transmittal of Draft 2020 Annual Progress Report to the California State Legislature on Achievements in Conservation, Recycling and Groundwater Recharge

Attached for your review is the draft Metropolitan report, *Annual Progress Report to the California State Legislature on Achievements in Conservation, Recycling and Groundwater Recharge*. On or before February 1st of each year, Metropolitan submits an annual report to the California State Legislature on our progress in achieving the goals of increased emphasis on cost-effective conservation, recycling, and groundwater recharge. This draft report presents these achievements during fiscal year 2018/19.

In conjunction with the report, Metropolitan will hold a public hearing at its regularly scheduled Water Planning and Stewardship Committee Meeting on December 9, 2019 to review our region's achievements. Metropolitan has invited knowledgeable persons from the fields of water conservation and sustainability to comment at the hearing. The public hearing will commence with a staff report reviewing the achievements. Next, invited experts will be requested to make comments on the report. Thereafter, the public will be invited to comment.

A copy of the final report will be distributed prior to the February Board and Committee meetings. Metropolitan will be submitting the final report to the California State Legislature by February 1, 2020.

A handwritten signature in black ink, appearing to read "Jeff Kightlinger".

Jeffrey Kightlinger

Attachment

cc: Member Agencies

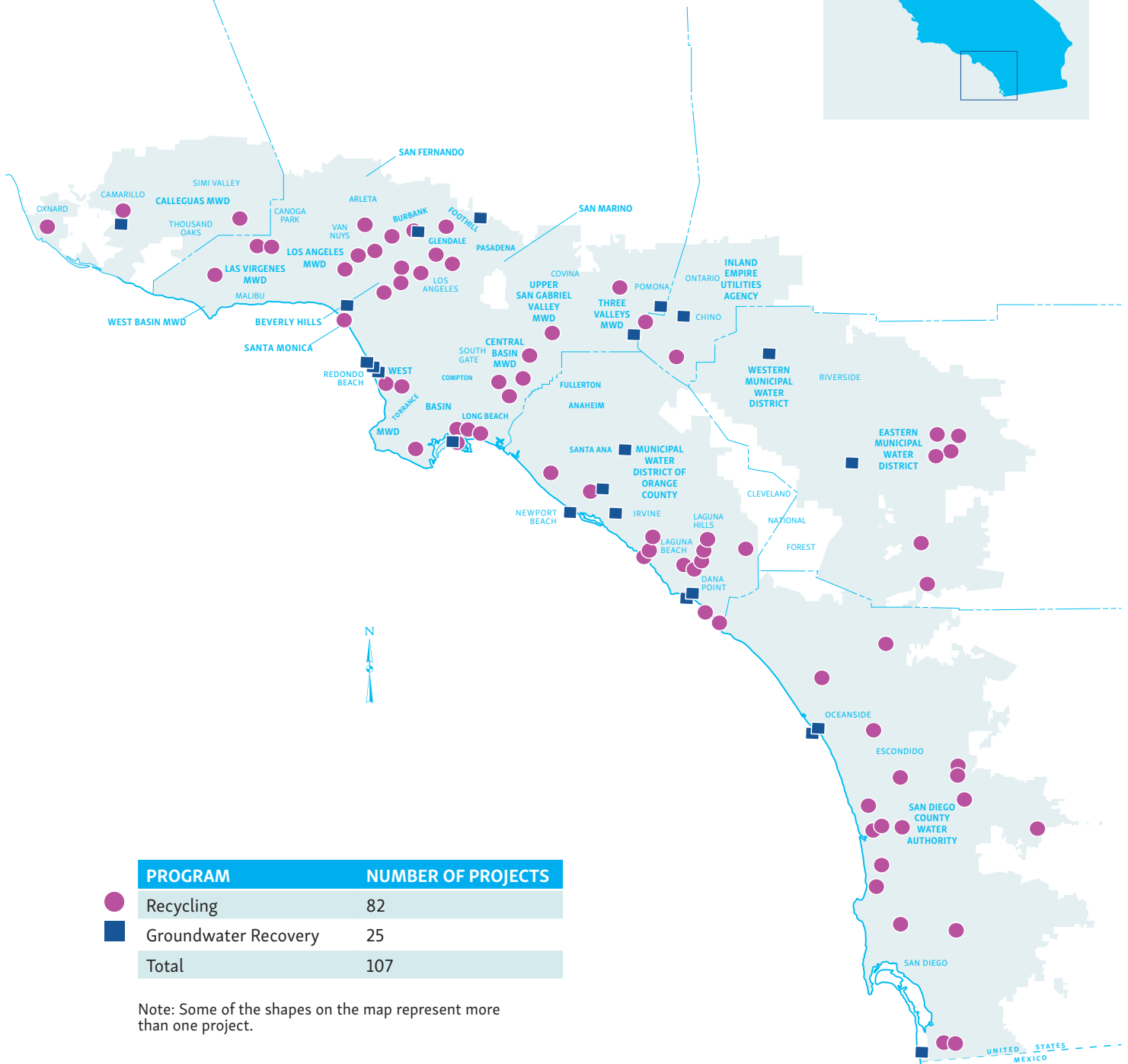
ACHIEVEMENTS IN CONSERVATION, RECYCLING AND GROUNDWATER RECHARGE

FEBRUARY 2020
COVERING FISCAL YEAR
JULY 2018 – JUNE 2019



WATER  **TOMORROW**
Annual Report to the California State Legislature

METROPOLITAN'S LOCAL RESOURCES PROGRAM



For more information about this report, contact Metropolitan's Legislative Office in Sacramento at (916) 650-2600.

TABLE OF CONTENTS

- 3 About Metropolitan
- 4 Introduction Uniquely Metropolitan
- 6 Achievement Scorecard
- 9 Conservation
- 15 Communications and Outreach
- 23 Local Resources
- 31 Watershed Initiatives
- 39 About this Report

The Colorado River
Aqueduct delivers one
of the Southland's two
primary sources of
imported water



A time-worn seal of
Metropolitan history
at the first water
treatment plant, the
F.E. Weymouth Water
Treatment Plant





ABOUT METROPOLITAN

The Metropolitan Water District of Southern California was established in 1928 under an act of the state Legislature to provide supplemental water supplies to its member agencies in Southern California.

Metropolitan is a public agency and a regional water wholesaler. It is a voluntary cooperative of 26 member agencies that purchase some or all of their water from Metropolitan. These member agencies and sub-agencies provide water for approximately 19 million people across their six Southern California counties. Metropolitan is governed by a 38-member board of directors made up of representatives from each of Metropolitan's member agencies. The mission of Metropolitan is to provide its 5,200-square-mile service area with adequate and reliable supplies of high-quality water to meet present and future needs in an environmentally and economically responsible way.

Metropolitan draws supplies from the Colorado River through the Colorado River Aqueduct, which it owns and operates; from Northern California via its participation in the State Water Project; and from local programs and transfer arrangements. An increasing percentage of Southern California's water supply comes from conservation, water recycling and recovered groundwater.

Conservation and resource development take place at the local level, and regional approaches have proven to be effective and benefit all Metropolitan member agencies. These programs help increase water supply reliability and reduce the region's reliance on imported water supplies to meet future demands. They decrease the burden on Metropolitan's infrastructure, reduce system costs, and free up conveyance capacity to the benefit of all system users. The programs advance the legislative intent that Metropolitan increase "sustainable, environmentally sound and cost-effective water conservation, recycling, and groundwater storage and replenishment measures." Metropolitan also is involved in other beneficial programs and initiatives as detailed in this report.

UNIQUELY METROPOLITAN: A REGIONAL SUCCESS STORY

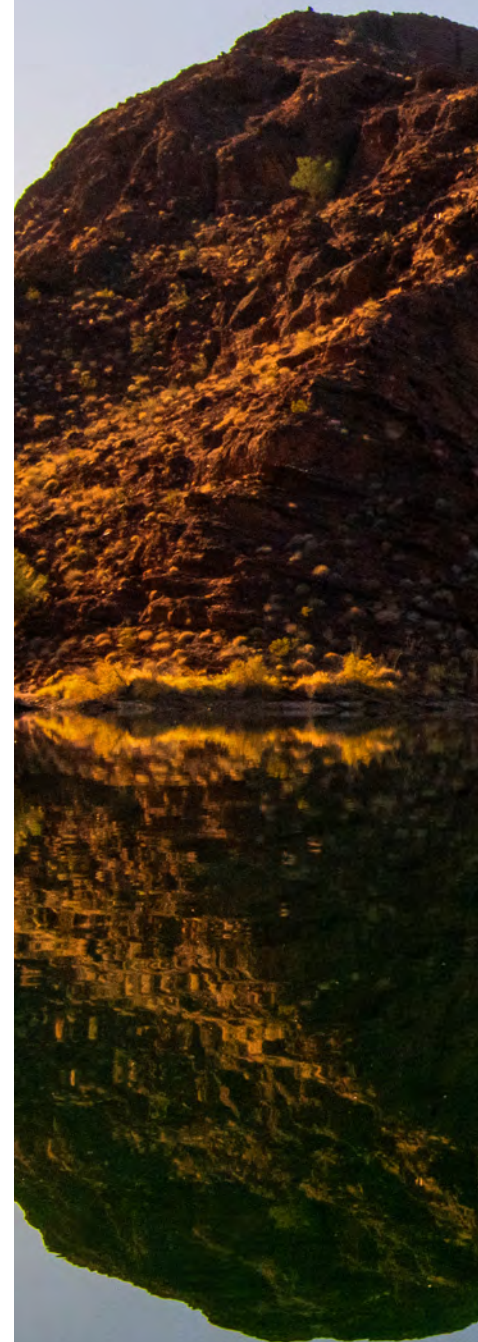
Metropolitan is unique in many ways. It is unique in how it was formed by an act of the state legislature in 1927 to build and operate the Colorado River Aqueduct bringing water to Southern California. Its governing structure is unique because it is a collective of public agencies that collaborate to address a dynamic set of water issues for the six-county region. And the way Metropolitan operates is unique by providing its 26 member agencies with the same access to a safe, reliable water supply and a range of benefits and services irrespective of their individual demands. Those benefits and services include initiatives to promote conservation and watershed management programs that protect water supplies and environmental values.

Twenty years ago, Metropolitan's first annual Regional Progress Report to the Legislature was published, detailing achievements in conservation, recycling and groundwater recharge. Highlights from this year's report include the following accomplishments:

- Investments of more than \$1 billion in conservation and recycled water have helped reduce per-capita water use in Southern California by more than one-third since 1990. The result has been a cumulative water savings of 3 million acre-feet.*
- The regional Local Resources Program now includes more than 100 water recycling and groundwater recovery projects that together have produced nearly 4 million acre-feet of water.
- Metropolitan's newly opened water recycling demonstration plant is testing innovative technologies with a goal to determine if this could be a drought-proof source of water that would increase local water supplies.
- Education, public awareness and outreach efforts included new initiatives to promote native plants and more effectively reach disadvantaged communities with new conservation rebate programs, sustainability initiatives and local outreach partnerships.

In the coming year, Metropolitan will begin to update its resource management roadmap known as the Integrated Water Resources Plan so that Southern California is prepared for a changing climate and other challenges. That work will serve as a foundation for Metropolitan to further diversify its water supply portfolio and continue to make the most of its unique role to ensure sound water resource management for Southern California.

* An acre-foot is approximately 326,000 gallons--enough for about three Southland families for one year



Picturesque Copper
Basin reservoir

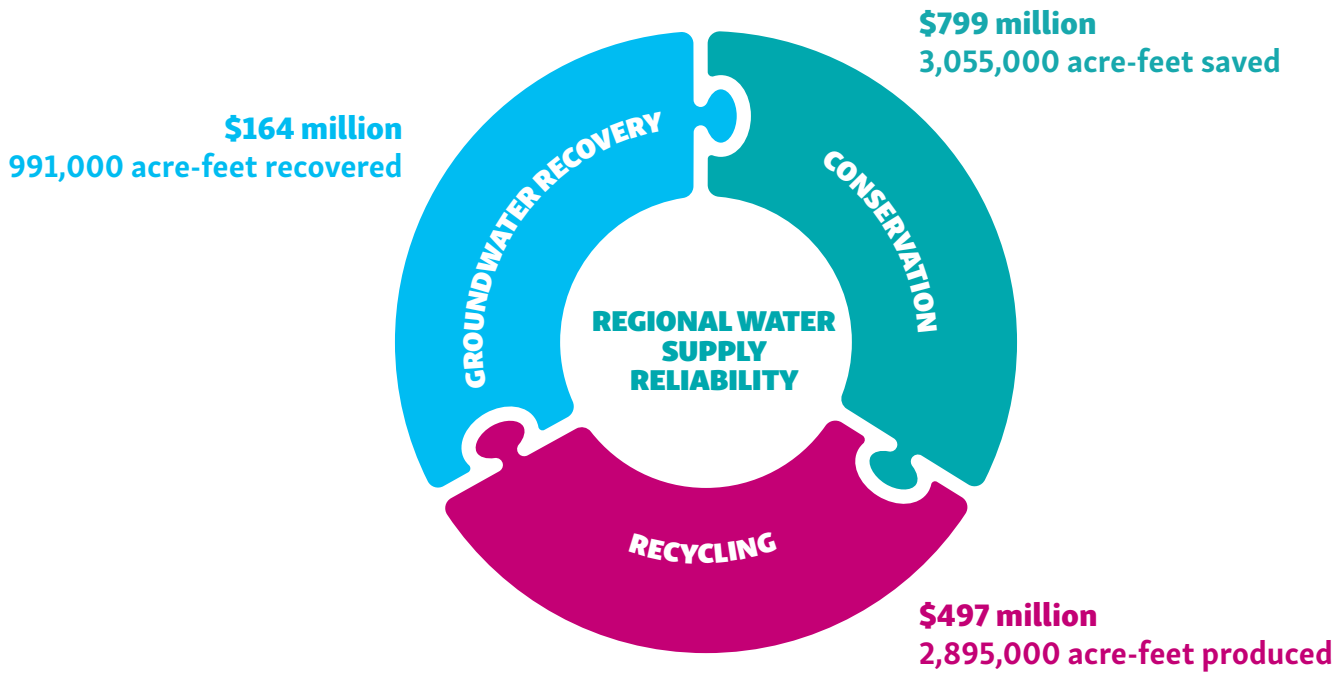


ACHIEVEMENT SCORECARD

Conservation		
FY 2018/19 Total Water Saved¹	1,043,000 acre-feet	
New Water Saved From Metropolitan Conservation Credits Program ²	5,000 acre-feet	
Water Saved From Existing Metropolitan Conservation Credits Program ³	208,000 acre-feet	
FY 2018/19 Investment		
Metropolitan Conservation Credits Program Investment ⁴	\$17 million	
Member Agency Conservation Investment ⁵	\$11 million	
Metropolitan Outreach & Education	\$6 million	
Cumulative Savings Since 1990		
Water Saved From Metropolitan Conservation Credits Program ⁶	3,055,000 acre-feet	
Metropolitan Conservation Investment (excluding funding by member agencies) ⁷	\$799 million	
Recycled Water		
FY 2018/19 Production⁸	453,000 acre-feet	
Water Produced From Projects Receiving Metropolitan Funding	138,000 acre-feet	
Water Produced From Projects Without Metropolitan Funding (incl. Santa Ana River base flow) ⁹	314,000 acre-feet	
FY 2018/19 Investment		
Metropolitan Funding	\$22 million	
Cumulative Production & Investment Since Inception¹⁰		
Production With Metropolitan Funding	2,895,000 acre-feet	
Metropolitan Investment	\$497 million	
Groundwater Recovery		
FY 2018/19 Production	112,000 acre-feet	
Water Produced From Projects Receiving Metropolitan Funding	50,000 acre-feet	
Water Produced From Projects Without Metropolitan Funding	62,000 acre-feet	
FY 2018/19 Investment		
Metropolitan Funding	\$7 million	
Cumulative Production & Investment Since Inception¹¹		
Production With Metropolitan Funding	991,000 acre-feet	
Metropolitan Investment	\$164 million	
Conjunctive Use Program ¹²		
Metropolitan Cumulative Capital Investment	\$27 million	
Proposition 13 Grant Funds Administered by Metropolitan	\$45 million	
Water Stored Since Program Inception through August 2019	332,000 acre-feet	
Water Extracted Since Program Inception through August 2019	262,000 acre-feet	
Groundwater Replenishment ¹³		
FY 2018/2019 Delivery	125,000 acre-feet	
Cumulative Replenishment Delivery since 1984	3,963,000 acre-feet	
Regional Summary		
	FY 2018/19	Cumulative
Metropolitan's Investment in Water Conservation, Recycled Water and Groundwater Recovery ¹⁴	\$45 million	\$1.460 billion
	401,000 AF	6,941,000 AF

The numbers above have been rounded to present a topline view of conservative achievement. More precise numbers are included in the report narrative.

**METROPOLITAN'S
CUMULATIVE INVESTMENT: \$1.4 BILLION
CUMULATIVE SAVINGS: 6,941,000 ACRE-FEET**



Footnotes for the Achievement Scorecard

Numbers are based on the best available information during the production of this report and are subject to revision for accounting reconciliation.

1. Annual total savings include Metropolitan’s Conservation Credits Program, code-based conservation achieved through Metropolitan sponsored legislation, building and plumbing codes and ordinances, reduced consumption resulting from changes in water pricing, and pre-1990 device retrofits.
2. New water savings achieved through Metropolitan’s Conservation Credits Program and from member agency funded programs initiated in fiscal year 2018/19.
3. Includes water savings initially achieved through Metropolitan’s Conservation Credits Program and subsequently maintained through plumbing codes.
4. Active conservation investment includes administrative fees for contracted program vendors.
5. In addition to Metropolitan’s Conservation Credits Program, member agencies and retailers also implemented local water conservation programs within their respective service areas. Member agency investment figures include rebate funding beyond rebates already provided by Metropolitan’s Conservation Credits Program.
6. Cumulative water savings since 1990 that include water savings initially achieved through Metropolitan’s Conservation Credits Program and subsequently maintained through plumbing codes.
7. Metropolitan’s cumulative conservation investment for 2018/19 reflects a revision in total cumulative expenditures due to a reconciliation audit. Does not include outreach and education expenditures.

8. Figures reflect actual and estimated deliveries for all Metropolitan-assisted projects and payments reported for fiscal year 2018/19; cumulative production and investment reflect accounting reconciliation as data become available; annual regional production for recycled water includes an estimated 72,000 acre-feet of treated wastewater discharged to the Santa Ana River base flow that percolates into downstream groundwater basins. Total may not sum due to rounding.

9. Projects accounted for here include some that received funding at the outset through Metropolitan’s Local Resources Program. Once the term of the funding agreement expires, the projects continue, but further production is not factored into program totals.

10. Metropolitan initiated its Local Resources Program in 1982 to encourage production of recycled water for municipal purposes.

11. Metropolitan initiated its Groundwater Recovery Program in 1991 to encourage treatment and use of degraded groundwater for municipal purposes.

12. Construction of the conjunctive use storage programs was completed in 2008. Proposition 13 refers to Chapter 9 of the Safe Drinking Water, Clean Water, Watershed Protection, and Flood Protection Bond Act of 2000. Water extracted since program inception includes losses.

13. Figure is cumulative since 1984. Prior to 2013, Metropolitan provided replenishment water at a discounted rate to encourage long-term recharge and maintenance of groundwater basins and local reservoirs. Although the discounted replenishment rate was discontinued Jan. 1, 2013, Metropolitan continues to provide water for replenishment purposes at full service rates.

14. Metropolitan’s cumulative conservation investment for 2018/19 reflects a revision in total cumulative expenditures due to a reconciliation audit. Cumulative conservation investment does not include outreach and education expenditures.



CONSERVATION

If you add up all the conservation savings from the past 30 years, Southern Californians saved more than 3 million acre-feet of water. Those savings stem from rebate programs, smarter plumbing and building codes, and a shared commitment to use water more wisely.

A California Friendly®
garden replaces grass with
waterwise flowers and
plants

Metropolitan considers conserved water as a supply source for Southern California – supplementing imported water supplies and locally developed resources. Conserved water does not increase Metropolitan’s own water resources, but reduces demand on Metropolitan’s system. The savings help reduce overall regional water demands and ensure greater supply reliability for the region. By 2040, regional conservation is expected to account for more than one-quarter of Southern California’s water supply portfolio. To support continued conservation, Metropolitan has a number of initiatives that include financial incentives, as well as education and outreach programs. Metropolitan also supports legislation, codes and standard’s that lead to increased water savings.

During fiscal year 2018/19, Metropolitan’s active conservation efforts saved about 208,000 acre-feet of water. Rebates funded through Metropolitan’s Conservation Credits Program generated about 5,000 acre-feet of new water savings and will continue to produce more savings in years to come.

Since 1990, Metropolitan has invested \$799 million in conservation rebates, of which approximately \$17 million was spent in fiscal year 2018/19. Metropolitan typically calculates rebates based on \$195 per acre-foot of water savings over the life of a device or program. Exceptions include the turf replacement program, rain barrels and cisterns. These programs are aimed at market transformation and calculated differently. When available, Metropolitan supplements its conservation programs using state and federal grant funds.

Fiscal Year 2018/19 Conservation Program Highlights

1. Metropolitan provided about \$17 million in rebates, landscape and irrigation classes, research and outreach to help consumers reduce water use in their homes and businesses.
2. Metropolitan processed more than 32,600 applications for a total of \$11 million in regional rebate funding.
3. Metropolitan increased the turf replacement rebates to encourage sustainable landscape changes. Rules were revised to focus more on native plants and onsite water capture.

Gardening with California Natives

Check out the native plant profiles at bewaterwise.com

There are annuals, groundcovers, grasses, perennials, shrubs, succulents, trees and vines - all with photo descriptions, detailed plant characteristics and average cost per one gallon container.

bewaterwise.com

The advertisement features a purple header with the title 'Gardening with California Natives' in yellow. Below the header is a photograph of hands holding a small purple flower. The background of the photo is a lush garden with various purple and green plants. The text is positioned in the upper right and bottom center of the image.

DITCH YOUR GRASS. CLAIM YOUR REBATE.

bewaterwise.com

RAKE IN \$2 OR MORE PER SQ. FT.

The advertisement has a green background with a white border. It features a large yellow leaf shape on the right side containing the text 'RAKE IN \$2 OR MORE PER SQ. FT.'. There are several small illustrations of plants and flowers scattered around the text. The website 'bewaterwise.com' is prominently displayed in the center.

4. Metropolitan approved regional and member agency disadvantaged community rebate programs to increase participation, awareness and water efficiency in communities where water agencies may not have had the resources to fully promote the programs on their own.
5. Metropolitan started offering a new landscape class to contractors, designers and public agency personnel on California's Model Water Efficient Landscape Ordinance.
6. Metropolitan worked with its regional rebate vendor, EGIA, to increase consumer participation in the SoCal Water\$mart Program through in-store marketing efforts, like point-of-purchase signage at big-box retailers, high volume-irrigation equipment suppliers, nurseries, and garden centers located in the Metropolitan service area.

Metropolitan's Residential Conservation Programs

SoCal Water\$mart Residential Program

Metropolitan's regional rebate program is administered through SoCal Water\$mart to encourage and support the use of water-efficient products across the Southland. Residential rebates offered in fiscal year 2018/19 included high-efficiency clothes washers, premium high-efficiency toilets, high-efficiency sprinkler nozzles, smart irrigation controllers, rain barrels and cisterns. Metropolitan estimates about 1,220 acre-feet of annual water savings from more than 51,000 residential conservation device rebates funded by Metropolitan in fiscal year 2018/19.

Member Agency Residential Programs

Metropolitan also provides funding to member agencies for locally administered conservation programs. Qualifying residential projects include rain barrel distributions, turf replacement programs, sustainable landscape irrigation programs, customer water use messaging, as well as residential water surveys. Metropolitan estimates water savings of about 830 acre-feet annually from these programs administered in fiscal year 2018/19.

A sampling of outreach tools to promote rebates

\$250 rebate
for premium high-efficiency toilet

A NEW SEASON OF SAVINGS

A pilot program for multifamily property owners, apartment/condo associations

Multi-family regional pilot program

- 📍 The toilets must be installed in apartments built before 1994
- 📅 Act now, funding is limited
- 🌐 For eligibility details & requirements, visit socialwatersmart.com

THE METROPOLITAN WATER DISTRICT OF SOUTHERN CALIFORNIA

BLOOM!
Two swipes make a right.
You're a great pair.

Start Planting

Go back to the patch

Turf Replacement Program

Metropolitan's regional turf replacement program was reintroduced in the previous fiscal year, offering rebates in both commercial and residential sectors. In fiscal year 2018/19, Metropolitan increased the program rebate from \$1 to \$2 per-square-foot, expanded the allowable project size, and eased some requirements to make it easier for applicants. The turf replacement program offered rebates in fiscal year 2018/19 for the removal of about 2.3 million square-feet of lawn. This resulted in an estimated annual water savings of about 310 acre-feet.

Premium High-Efficiency Toilets

Metropolitan offers rebates for premium high-efficiency toilets that use no more than 1.1 gallons per flush. These devices use about 30 percent less water when compared to older ultra-low-flush toilets which use 1.6 gallons per flush. In fiscal year 2018/19, Metropolitan approved an initiative to increase water savings in disadvantaged communities. The initiative includes an 18-month regional pilot program to boost rebates from \$40 to \$250 to replace toilets in multifamily housing built before 1994 with premium high-efficiency models. Metropolitan estimates that rebates issued for both residential and commercial customers in fiscal year 2018/19 will save about 460 acre-feet of water per year.

High-Efficiency Clothes Washers

High-efficiency clothes washers (HECW) with an integrated water factor of 3.2 or less are eligible to receive rebates. The integrated water factor is the measure of the amount of water used to wash a standard load of laundry. These washers save more than 10,000 gallons per year compared to a conventional top-loading clothes washer. Metropolitan estimates water savings of about 500 acre-feet annually from HECW rebates in fiscal year 2018/19.

Smart Irrigation Controllers

Smart irrigation controller incentives have been available from Metropolitan since 2006. These units are now more technologically advanced, customer-friendly, and have a greater ability to determine optimal landscape water needs. Smart irrigation controllers save water by automatically adjusting watering schedules based on weather, soil conditions, plant material, sun exposure and slope. Metropolitan estimates water savings of about 1,690 acre-feet annually from Metropolitan smart controller rebates in fiscal year 2018/19.

Measured Water Savings

Informing consumers about their water use by comparing them to similar households has become an accepted way to encourage behavioral changes that increase household water conservation. Fiscal year 2018/19 saw a significant increase in this type of customer water use messaging by Metropolitan's member agencies, which resulted in a measured reduction in water use of about 150 acre-feet.

Metropolitan's Commercial Conservation Programs

Metropolitan's commercial conservation programs provide financial incentives for water-saving devices and projects including landscape transformation. Examples include rebates on certain commercial food devices, cooling towers and medical and dental equipment. Metropolitan estimates savings of about 2,950 acre-feet annually from commercial conservation programs in fiscal year 2018/19.

SoCal Water\$mart and Member Agency Commercial Programs

The majority of commercial conservation device activity came from Metropolitan's SoCal Water\$mart rebate program. Additionally, Metropolitan's member agencies and sub-agencies implemented water conservation programs for commercial sectors using Metropolitan incentives. Qualifying commercial projects have included turf removal and direct installation of high-efficiency toilets and multi-stream rotating sprinkler nozzles. Metropolitan estimates water savings of about 1,540 acre-feet from more than 2,410 applications to SoCal Water\$mart in fiscal year 2018/19. An additional 700 acre-feet of water were saved from member agency incentive programs.

Water Savings Incentive Program

The Water Savings Incentive Program is a regional pay-for-performance initiative. It is open to all commercial, industrial, institutional, agricultural and large landscape consumers with qualifying projects within Metropolitan's service area. Financial incentives are available for customized water-efficiency projects, including: the installation of commercial or industrial high-efficiency equipment; industrial process improvements; agricultural and landscape water efficiency improvements; and water management services. Incentives are based on the amount of water saved and capped at 50 percent of eligible project costs. In fiscal year 2018/19, Metropolitan estimates savings of about 710 acre-feet.

Research and Development

Innovative Conservation Program

Metropolitan's Innovative Conservation Program is a competitive grant program that evaluates water savings and reliability of innovative water saving devices, technologies and strategies. About \$570,000 of funding has been provided for the 2018 request for proposals by the U.S. Bureau of Reclamation, Southern Nevada Water Authority, Central Arizona Project, Southern California Gas Company, Western Resource Advocates, and Metropolitan for this round's selection of water efficiency studies. Fifty-five project proposals from diverse groups such as universities, entrepreneurs, commercial laboratories, non-profit organizations and individuals were submitted and evaluated by a selection committee. Twelve projects were selected for up to \$50,000 of funding each. Half of the selected projects focus on improving landscape water efficiency, while the other projects range from leak detection to innovative financing for graywater systems. The next request for proposals is expected to launch in 2020 and is subject to available funding.

High-efficiency clothes washers save water and money with each cycle

Metropolitan Research Focus

In addition to the Innovative Conservation Program, Metropolitan has been involved in multiple research efforts:

- Initiating a pilot residential household fixture study to determine the concentration of water efficient fixtures in homes and the amount of water usage attributed to these fixtures
- Completing a study on the water savings and outcomes of Metropolitan's previous turf removal program
- Partnering with the Alliance for Water Efficiency for research on:
 - Rationale behind landscape choices
 - Water savings potential of commercial cooling towers
- Evaluating the water savings potential of water system-wide processes for leak detection
- Partnering a pilot research program with member agencies to study the effect of household pressure management on reducing residential water usage





COMMUNICATIONS AND OUTREACH

Managing our region's water resources is a collaborative effort. It requires partnerships with our member agencies, local diverse communities, schools and businesses. Metropolitan supports many programs to save, reuse, and recover water. Getting the message out requires compelling outreach tools and education.

Since late 2013, Metropolitan’s conservation and education outreach programs have primarily been focused on the drought and the need for additional conservation to maintain the region’s water supply reserves. That message has shifted recently to emphasize conservation as a way of life through everyday water-saving habits and sustainable landscaping.

Advertising and Outreach Campaign

Metropolitan’s multilingual, multimedia “Save Water 365” campaign launched in July 2018 and delivered more than 1 billion media impressions. The campaign encouraged Southern Californians to save water every day and reminded residents to take advantage of rebate programs – including incentives for indoor and outdoor water-saving devices, as well as rebates for turf replacement projects that require more efficient irrigation systems, design and plants. It also reached diverse audiences and demographics with ads in English, Spanish, Mandarin, Korean, Vietnamese and Tagalog.

Working with Metropolitan’s 26 member agencies, the research-based advertising campaign included:

- Digital and online advertising
- Total 1,475 billboards and television commercials
- Radio messages on more than 50 stations
- Animated digital ads with general rebate and landscape transformation program messaging
- Print ads in community newspapers
- English and Spanish language Pandora radio stations and other customized materials and special outreach events throughout Southern California

It also included a grass-roots outreach effort in multiple languages through advertising at convenience and hardware stores and on food trucks, as well as a presence on a popular Chinese game show. The media strategy was designed to effectively target diverse communities, age groups, socioeconomic factors, and languages spoken in the region.

In August 2018, Metropolitan began an official sponsorship with Major League Baseball’s Los Angeles Dodgers. This sponsorship included a title night event featuring former board Chairman Randy Record throwing the opening pitch, and highlighted a Dodger groundskeeper and the many ways in which the Dodger organization conserves water to over 40,000 fans. Public service announcements were displayed on LED boards throughout the stadium, as well as cross-promotions on conservation on Metropolitan’s and the Dodgers’ social media platforms.

In April 2019, the general conservation message of the 365 campaign became more targeted and focused on promoting the incentive under Metropolitan’s revamped turf replacement program. The incentive provides Southern Californians \$2 for every square-foot of grass they replace with more water efficient sustainable landscaping. The campaign continued to reach diverse audiences on multi-media platforms: digital billboards featured in shopping malls, grocery stores and movie theaters encouraged residents to “ditch their grass and claim their rebate.” Radio spots promoting the “ditch your grass” message in English and Spanish were featured on nearly 40 radio stations, and creative digital display ads generated nearly 120 million impressions on digital media and nearly 300,000 ad clicks.

Metropolitan also partnered with Los Angeles- and San Diego-based news shows to develop water conservation programming in English and Spanish. On-air talent spoke about the benefits of replacing your lawn with California Friendly® and native landscaping and promoted Metropolitan’s turf rebate.

**A specially designed
L.A. Rams program
advertisement promotes the
turf replacement program**

RIP OUT ALL CLAIMS YOUR CLAIMS



and GET PAID

H₂



Rebates available at
bewaterwise.com[®]



THE METROPOLITAN WATER DISTRICT
OF SOUTHERN CALIFORNIA

www.mwdh2o.com



@mwdh2o



@mwdh2o
 Nearly 28,000 followers
 27+ million impressions



@mwdh2o
 11,700+ followers
 330,000+ impressions



@mwdh2o
 3,180+ followers
 660,000+ impressions



@mwdh2o
 5,480 followers
@bewaterwise2o
 3,785 followers



Mwdh2o
 1,610+ subscribers
 1.1 million views

1.9 billion impressions combined



Throughout the year, Metropolitan officials conducted dozens of interviews with news reporters to discuss a wide range of water-related issues. Topics included the effect of climate change and drought on Colorado River resources, water supply reliability and conservation, and raising awareness about Metropolitan's new turf replacement program. As part of this public outreach, Metropolitan's General Manager Jeffrey Kightlinger blogged on Metropolitan's webpage mwdh2o.com and wrote guest blogs and op-eds encouraging conservation.

Metropolitan continues to provide outreach to Southern California's businesses and industry. Metropolitan is an active member in many chambers of commerce and other business organizations, and provides regular updates to members on water policy issues and programs. Water use efficiency programs that help reduce demand for potable water are a key focus. In addition, Metropolitan hosts hundreds of community and business leaders on inspection trips of the State Water Project and Colorado River Aqueduct to help them better understand the challenges of providing reliable water to Southern California and how the Colorado River is managed to provide water for urban areas and agriculture.

All elements of Metropolitan's advertising and outreach campaign direct audiences to one central portal for information on conservation and rebates: Metropolitan's conservation website, bewaterwise.com[®]. The site provides water conservation information to hundreds of thousands of unique visitors a year in English, Spanish and Chinese languages. Information provided includes extensive conservation ideas, drought information, native plant profiles, and links to Metropolitan's turf rebate program, as well as other rebates and incentives for homes, businesses, industry, agriculture, schools, and institutions. It also features online California Friendly[®] Landscape training classes where home gardeners and landscape professionals can learn the latest ways to reduce water use and use native plants in landscapes.

Behind the scenes of "Wasting Water is Scary," the first in a trilogy of spots created and produced in-house by Metropolitan



Metropolitan invests in conservation outreach through social media, spending more than \$200,000 this fiscal year on targeted Facebook posts featuring animation and static images focused on general conservation and turf replacement rebates. From September 2018 to September 2019, content on Metropolitan’s Facebook page received more than 15 million impressions, reaching more than 4 million people. Metropolitan also uses Twitter and Instagram to reach a broader audience.

The success of Metropolitan’s outreach activities has been recognized with several prestigious awards, including honors from the National Association of Government Communicators for Chinese-language conservation outreach and the bewaterwise.com partnership with the Los Angeles Dodgers.

Community Outreach

The Community Partnering Program provided opportunities for 70 district-sponsored projects and programs such as water quality testing kits, water conferences, ever-popular Earth Day events, community gardens and signage, and a variety of educational publications that promote core conservation and water-use efficiency issues.

These events and initiatives engaged an audience of about 116,000 attendees for fiscal year 2018/19. The program continues to offer non-profit organizations, educational institutions, and other resource agencies funding for deserving ideas with a water resources education nexus.

Education Programs

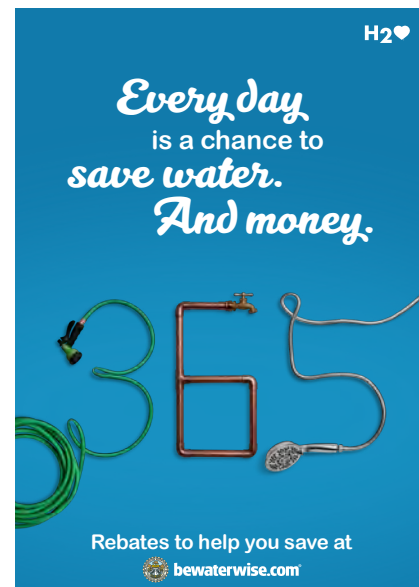
Metropolitan continues to update and expand a comprehensive K-12 water education curriculum that aligns to Common Core and Next Generation Science Standards for each grade level in the areas of science, math, language arts, and social studies classroom materials. Education staff worked with member agencies to hold more than 200 events and engaged nearly 200,000 students, teachers, parents and participants through activities, social media and curriculum materials.

A virtual reality tour of the State Water Project that complements Metropolitan’s current Colorado River Aqueduct virtual reality tour was created in collaboration with the California Department of Water Resources. Staff utilizes educational technologies including virtual reality tours of the Colorado River Aqueduct and augmented reality watershed exhibits, to encourage critical thinking about regional water issues. During fiscal year 2018/19, more than 12,000 public visitors and students toured the Diamond Valley Lake Visitor Center to learn more about Metropolitan’s water systems and programs.

For the first time, Metropolitan’s World Water Forum college grant program solicited proposals for \$20,000 grants to conduct research and development on improving water quality, environmental science of watersheds, and the implementation of water-use efficiency technologies.

Solar Cup™, the nation’s largest high school solar boat race, engaged 40 teams and more than 750 high school students in the STEAM (science, technology, engineering, art, and math) topics of water stewardship and renewable energy.

Metropolitan’s “Water is Life” student art exhibit and calendar annually compiles over 12,000 pieces of art generated by K-12 students throughout Metropolitan’s service area.



Metropolitan partnered with news shows for conservation segments in English and Spanish



bewaterwise.com[®]

Despierta
SAN DIEGO

Metropolitan Water District of Southern California
Más Información Sobre Ahorro de Agua en: BEWATERWISE.com



bewaterwise.com[®]



Despierta
LOS ANGELES

BEWATERWISE.COM
Para más información



RECLAIMED WATER

RECLAIMED WATER

RECLAIMED WATER

LOCAL RESOURCES

Regional supply reliability is helped by reducing or offsetting new demand on Metropolitan's imported water supplies through development of local sources such as recycled water, treatment of otherwise unusable groundwater, or seawater desalination. Metropolitan's Local Resources Program supports these regional avenues for new supply.

Since 1982, Metropolitan has invested in local projects throughout its six-county service area, which contribute to regional water supply reliability through the Local Resources Program. The LRP provides financial incentives to encourage local development of recycled water, treatment of degraded groundwater for municipal use and seawater desalination. As of fiscal year 2018/19, Metropolitan has invested \$661 million to fund 82 recycled water projects and 25 groundwater recovery projects that have produced about 3.9 million acre-feet. In October 2018, Metropolitan revised the LRP program with a new interim target to allow for up to 170,000 acre-feet per year of new agreements.

Water Recycling and Groundwater Recovery

In fiscal year 2018/19, Metropolitan provided about \$22 million for production of 138,000 acre-feet of recycled water for non-potable and indirect potable uses. Additionally, Metropolitan provided about \$7 million to support projects that produced about 50,000 acre-feet of recovered groundwater for municipal use. One new LRP funded project began operation in fiscal year 2018/19, while another began construction. Additionally, 314,000 acre-feet of recycled water (including wastewater discharged to the Santa Ana River that percolates into downstream groundwater basins) and 62,000 acre-feet of recovered groundwater were produced by local agencies through other funding sources. Figures 1 and 2 show total recycled water and groundwater recovery production in Metropolitan’s service area, including local agency funded projects.

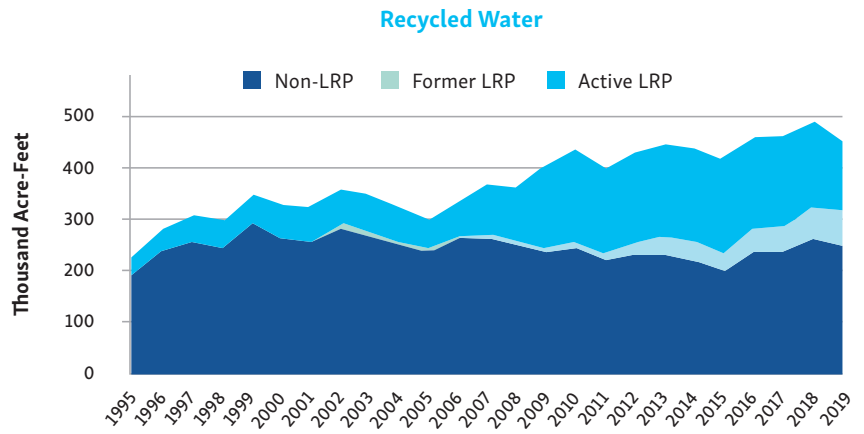


Figure 1

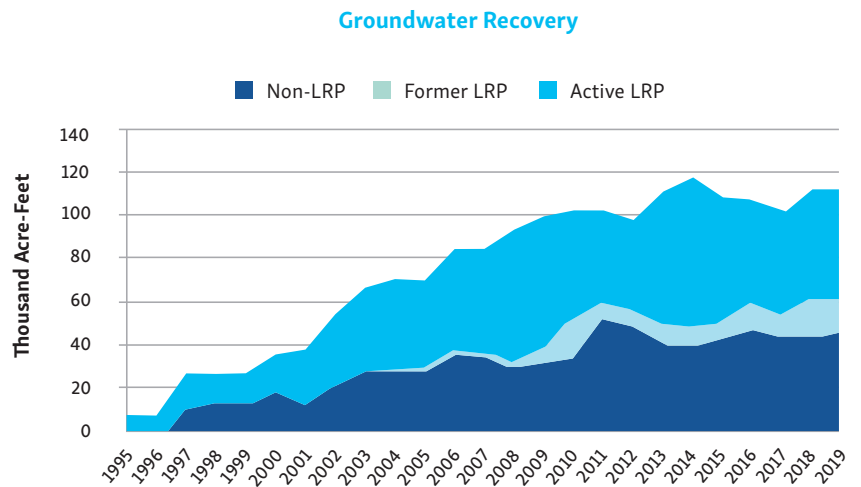


Figure 2

Non-LRP: Projects developed without LRP agreements with Metropolitan. **Former LRP:** Projects developed under LRP whose agreements have expired and no longer receive Metropolitan financial incentives. **Active LRP:** Projects developed under LRP and currently receive Metropolitan financial incentives for eligible production.

In addition to the LRP, Metropolitan is exploring the potential for increasing its investment in local resources through the Regional Recycled Water Program, which would produce high quality water to replenish the region's groundwater basins. In fiscal year 2018/19, Metropolitan completed construction of the Advanced Purification Center in partnership with the Sanitation Districts of Los Angeles County. The recycled water demonstration facility in Carson will provide information needed to determine the feasibility of a full-scale regional facility.

On-site Retrofit Program

The On-site Retrofit Program was launched in July 2014 as a two-year pilot program with a budget of \$7.5 million to provide financial incentives for the conversion of potable irrigation or industrial water systems to recycled water. In addition, the pilot program received a \$700,000 grant from the U.S. Bureau of Reclamation. Building on the success of the pilot program, Metropolitan's board approved the continuation of the program with an additional budget of \$10 million through June 2018. Starting in fiscal year 2018/19, the program became permanent with an annual budget of \$3 million. As of fiscal year 2018/19, the On-site Retrofit Program provided funding to 364 sites, replacing 11,800 acre-feet per year of potable water with recycled water.

Groundwater Management

Metropolitan partners with local agencies to store imported surface water in groundwater basins for use in times of shortage under conjunctive-use agreements. Metropolitan currently has nine storage projects with nearly 212,000 acre-feet of storage capacity and can store up to 53,000 acre-feet per year and withdraw up to 71,000 acre-feet annually during shortage years. With improved hydrologic conditions, Metropolitan called upon agencies to store water in the conjunctive use accounts. In fiscal year 2018/19, Metropolitan stored about 5,000 acre-feet for future drought mitigation.

**The Rio Hondo Spreading
Grounds in Pico Rivera**



Under the Cyclic Program, Metropolitan is able to capture surplus imported water supplies that cannot be managed through existing storage facilities or other programs. Metropolitan delivers water to member agencies and allows them to pay for these deliveries over a period of up to five years. Metropolitan has, and is entering into, new cyclic agreements to manage up to 560,000 acre-feet. Previously, Cyclic Program agreements did not include a mechanism to offset the higher cost of extraordinary actions that agencies might take to capture increased volumes of imported water in their cyclic accounts. In April 2019, Metropolitan's board authorized the Cost-Offset Program, which provides a credit of up to \$225/acre-foot to member agencies to help offset costs. The Cost-Offset Program could help manage up to 60,000 acre-feet in 2019.

Regional Recycled Water Program

The Regional Recycled Water Program could purify wastewater to produce up to 168,000 acre-feet per year of high quality water to replenish the region's groundwater basins and for raw water augmentation upstream of Metropolitan's Weymouth and Diemer water treatment plants. In fiscal year 2018/19, the conceptual study phase of the project was completed. A report evaluated phasing of the program; groundwater basin conditions; treatment requirements; conveyance facilities; the cost of a full-scale facility; and the potential for raw water augmentation.

Construction of the Advanced Purification Center demonstration plant in Carson began in September 2017, and operations began in the fall of 2019. The 500,000-gallon-per-day facility will be in operation for at least one year to generate information needed for the possible construction of a full-scale advanced water treatment facility – potentially one of the largest water recycling facilities in the nation.



Metropolitan also is co-funding six potable and one non-potable reuse studies with the Water Research Foundation. Metropolitan selected the studies from WRF's nationwide Advancing Potable Reuse Initiative, which supports potable reuse as a reliable and sustainable component of integrated water resource management. Metropolitan's \$975,000 in co-funding will complement nearly \$7 million in non-Metropolitan funds, including \$3.5 million in funding from the State Water Resources Control Board. WRF has completed Requests for Proposals for six of seven studies and anticipates completing the studies in fiscal year 2021/22.

The Advanced Purification Center will generate information needed to evaluate the possibility of a full-scale treatment facility

Future Supply Actions

Future Supply Actions are low-cost, low-risk actions designed to remove barriers to local water resource development and better prepare the region for unforeseen water supply challenges. In 2013, Metropolitan's board approved this \$3 million innovative research program, which consisted of member agency co-funded technical studies and pilot tests in the areas of groundwater, recycled water, seawater desalination and stormwater.

In January 2019, Metropolitan's board approved a second round of member agency-sponsored studies. Through the program, Metropolitan will co-fund 14 studies amounting to \$3.2 million in total funding provided by Metropolitan. The studies range from pilot tests to white papers and include all four local supplies covered by the program. They are currently underway and are expected to be completed in 2021. Metropolitan will hold a symposium to share results in late 2021.



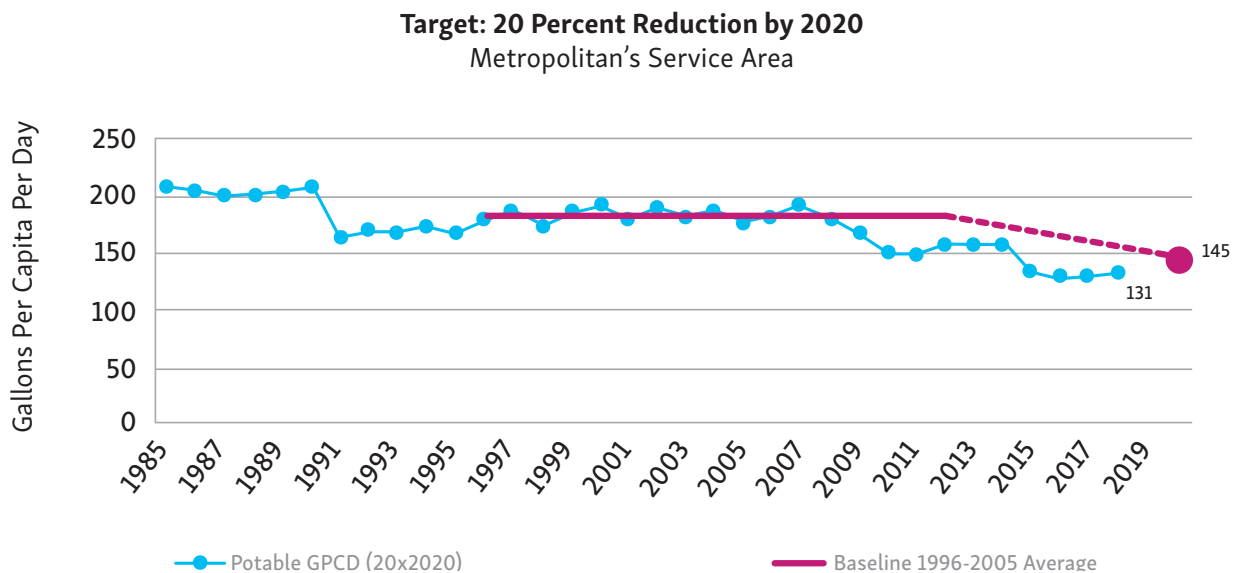


Equipment intalled at the new
Advanced Purification Center

Water-Use Efficiency Strategy

Metropolitan and the Natural Resources Defense Council co-sponsored the Water Conservation Act of 2009 (SBX7-7), which targets a 20 percent reduction statewide in urban per capita potable water use by the year 2020 (commonly known as 20x2020). Per capita water use is one indicator of progress in advancing water-use efficiency. Metropolitan’s baseline is 181 gallons per capita per day, and the 2020 reduction target is 145 GPCD. Between 2011 and 2014, there was a slight increase in per capita water use explained in part by economic recovery from the recession and drier weather as compared with previous years. GPCD fell significantly during calendar years 2015 and 2016, as the region responded to the governor’s Executive Order B-29-15 that mandated a 25 percent emergency reduction in urban residential water use. GPCD has remained low due in part to consumers continuing outdoor conservation practices and local outdoor water use ordinances remaining in effect after the state-wide mandatory restrictions were lifted. In 2018, regional potable GPCD was 131 GPCD, well below the 2020 target.

In 2018, the California Legislature enacted two policy bills – Senate Bill 606 and Assembly Bill 1668 – to establish a new foundation for long-term improvements in water conservation and drought planning, and to adapt to longer and more intense droughts in California due to climate change. These two bills amend existing law to achieve those goals by providing expanded authority to state agencies and new requirements for local water providers. Metropolitan is participating in DWR’s collaborative process to support the implementation of urban water use efficiency standards and establish reporting requirements. Metropolitan staff will further evaluate how the two bills impact Metropolitan’s conservation and drought planning efforts.



Notes about the graph:

1. Calendar year data
2. 2018 GPCD is based on best available data (as of July 2019) and is subject to reconciliation. Data is received in 2019 for the previous calendar year.
3. Baseline per capita water use based on 1996-2005 average (181 GPCD)
4. Target GPCD for 2020 based on 20% reduction from baseline (145 GPCD) ●



WATERSHED INITIATIVES

Metropolitan's mission statement has dual priorities to be both economically and environmentally responsible in the delivery of water. In the course of doing business, Metropolitan collaborates with regional water management groups to address a range of issues including source water quality, stormwater management, salinity, multi-species reserves and habitat restoration.

Local Watersheds

Metropolitan's commitment to environmental stewardship is reflected in its many activities. Staff actively participates on planning boards and organizations focused on efforts that include the protection of water quality at the source.

Integrated Regional Water Management

Metropolitan continues to participate in a multi-jurisdictional water planning effort, serving on the Greater Los Angeles County Region Leadership Committee as its surface water management area representative.

Southern California Water Coalition Stormwater Task Force

Metropolitan continues to participate in the Southern California Water Coalition Stormwater Task Force. In 2019, the SCWC Stormwater Task Force developed a white paper that discussed innovative project implementation and enhanced operation and maintenance strategies.

In addition, Metropolitan hosted the SCWC Stormwater Task Force annual workshop on September 27, 2018, which brought together local agencies, regional planners and non-government agencies for a discussion on regional stormwater issues.

Council for Watershed Health

Metropolitan has partnered with the Council for Watershed Health on research studies and educational outreach efforts focused on water supply reliability, quality and efficiency. The council currently has four programs: Living Laboratory, Sustainable Landscape Resources, Healthy Streams, and Watershed Coordination and Planning. Metropolitan serves on the council's board of directors and collaborates on projects to advance the health and sustainability of the region's watersheds and natural resources.

In January 2018, Metropolitan entered into an agreement with the Council for Watershed Health on a study to better understand and support school water conservation efforts in underserved communities. Under this agreement, the council will perform three tasks:

1. A survey to assess which schools in Metropolitan's service area either have taken or are planning to take advantage of the district's water efficiency incentives and rebates
2. A special analysis of school district property lines within disadvantaged communities in Metropolitan's service area
3. A barrier analysis to identify impediments hindering schools and school districts from developing and implementing water efficiency projects, and highlight successful school greening plans, programs, and projects

As of fiscal year 2018/19, the council has completed a survey targeting school principals (private schools), disadvantaged community school district facilities personnel, and school district energy managers and has nearly completed the spatial analysis of school districts serving underserved communities. The council's work under this agreement will assist Metropolitan in targeting opportunities to promote water efficiency incentive programs in these underserved areas.

Southern California Salinity Coalition

Formed in 2002, the Southern California Salinity Coalition promotes research and outreach activities to address the need to control or reduce salinity in drinking water, wastewater, groundwater, and recycled water. Metropolitan is a founding member and holds a position on the board. In fiscal year 2018/19, the SCSC presented the results of a study regarding the impacts of increasing wastewater salinity concentrations on recycled water supplies in Southern California to several water and wastewater stakeholders and awarded a two-year scholarship focused on recycled water irrigation practices. The SCSC also updated its governance structure, launched an overhaul of its website, and began the development of new project selection criteria for funding new projects.

Metropolitan Board Chairwoman Gloria Gray and GM Jeffrey Kightlinger plant trees at the Dennis Underwood Conservation area in the Palo Verde Valley in honor of the former Metropolitan General Manager



Multi-Species Habitat Protection and Preservation

Four multi-species reserves encompassing about 30,000 acres are the cornerstone of Metropolitan's investments in environmental conservation and stewardship. These reserves provide mitigation for impacts from construction of Metropolitan infrastructure projects, watershed protection around reservoirs and protection of habitat for native species. The reserves also provide opportunities for education, research, and trails for bicycling, hiking, and horseback riding. A snapshot of the four reserves follows:

1. Southwestern Riverside County Multi-Species Reserve

Protection for habitat and many wildlife species is provided by the Southwestern Riverside County Multi-Species Reserve. The reserve consists of nearly 14,000 acres surrounding Diamond Valley Lake and Lake Skinner, and the Dr. Roy E. Shipley Reserve, which was absorbed into the SWRCMSR, located between the reservoirs. The reserve is home to at least eight types of natural habitat and many sensitive bird, animal, and plant species.

Metropolitan partners with the California Department of Fish and Wildlife, Riverside County Habitat Conservation Agency, Riverside County Regional Park and Open-Space District, and U.S. Fish and Wildlife Service to cooperatively manage the reserve. Provisions to ensure the protection of the Diamond Valley Lake and Lake Skinner watersheds are incorporated into management of the reserve, including the appropriate siting of public access points and vegetation management tools.

2. Upper Salt Creek Wetland Preserve

A 40-acre preserve purchased as mitigation for the Eastside Pipeline, the Upper Salt Creek Wetland Preserve provides protection for unique vernal pool habitat and rare plants. The preserve is protected in perpetuity from future development, and public access is not provided.



3. Santa Rosa Plateau Ecological Reserve

The nearly 10,000-acre Santa Rosa Plateau Ecological Reserve is home to a number of endangered, threatened or rare animals and plants, including a species of fairy shrimp that exists nowhere else on earth. Establishment of the reserve, as partial mitigation for construction of Diamond Valley Lake, protected some of the most unique chaparral, grassland, oak and vernal pool habitats in California.

4. Lake Mathews Multiple Species Reserve

The 5,100-acre reserve surrounding Lake Mathews is managed for native habitat and sensitive plant and animal species, including the endangered Stephens' kangaroo rat and coastal California gnatcatcher. The reserve is managed in partnership between Metropolitan, Riverside County Habitat Conservation Agency, USFWS and DFW. Habitat management tools and strategies on the reserve, such as grazing and prescribed burns, are critically evaluated for their potential effects to water quality in Lake Mathews. The lake itself is an important bird resting and feeding site, especially in winter, when ducks, double-crested cormorants, grebes and eagles visit.

**Trails at Diamond Valley Lake
welcome hikers, bicyclists
and equestrians**

Colorado River

The Lower Colorado River Multi-Species Conservation Program

The Lower Colorado River Multi-Species Conservation Program is a comprehensive restoration program along the Colorado River through the states of Arizona, Nevada, and California. The plan targets the restoration of natural habitat communities once prevalent along the river corridor—riparian forests, marshes, and backwaters. The benefits of restoring natural communities go beyond providing habitat for native aquatic and terrestrial species. Creation of more than 8,000 acres of new habitat, comprised of conservation areas, provides other benefits including water quality improvements and greenhouse gas reduction. Through Metropolitan's support as the largest non-federal contributor, along with its federal and state partners, the program continued to make great advances in the restoration of native habitats and natural processes along the lower Colorado River from Lake Mead to the southern international boundary with Mexico.



As of fiscal year 2018/19, about 6,500 acres of habitat have been restored. The latest area added for restoration is the Dennis Underwood Conservation Area. This 635-acre site in the Palo Verde Valley was established in 2019 to honor the water industry veteran of more than 30 years whose service included commissioner for the U.S. Bureau of Reclamation from 1989 to 1993 and general manager of Metropolitan from April 2005 until his passing in November 2005.

Colorado River Salinity Control Forum

The Colorado River Basin Salinity Control Forum is an organization of the seven Colorado River Basin states of Arizona, California, Colorado, Nevada, New Mexico, Utah, and Wyoming. The forum coordinates salinity control efforts among the states; coordinates with federal agencies on the implementation of the Colorado River Basin Salinity Control Program; and works with Congress on the authorization and funding of the program. The forum funds efforts to reduce salt loading to the Colorado River, and disseminates information on salinity control.

Metropolitan holds the forum's board chair position and participates in technical workgroup activities. In 2017, the forum's salinity control measures removed about 1.33 million tons of salt from the Colorado River. This translates to more than a 100 mg/L reduction in salinity concentration in the Colorado River's lower basin and Metropolitan's Colorado River Aqueduct supplies. In fiscal year 2018/19, the forum completed a Funding Opportunity Announcement for 18,500 new tons of annual salinity control and launched another for additional salinity control projects. Funded and planned projects are expected to control an additional 63,500 tons per year by 2020. In fiscal year 2018/19, the forum also participated in the development of environmental documentation for the replacement of the Paradox Valley Unit injection well, which is operated by the U.S. Bureau of Reclamation and is the single largest salinity control project on the Colorado River. The PVU is currently not operational due to a seismic event that halted the injection well's operations in March 2019.



Multi-State Salinity Coalition

The Multi-State Salinity Coalition is a consortium of water agencies from across the country promoting information exchange on salinity management and desalination issues. A founding member, Metropolitan serves on the MSSC's board of directors. Metropolitan sponsored MSSC's Annual Salinity Summit held in Las Vegas in February 2019. The summit discussed a range of topics including salinity concentrate and management, watershed management, international projects, revenue stability, potable reuse and innovative salinity management strategies.

Sacramento-San Joaquin Delta

California EcoRestore Habitat Restoration

Metropolitan participates in a Yolo Bypass working group and is also a cooperating agency for the Yolo Bypass Salmonid Habitat Restoration and Fish Passage Project Environmental Impact Report/Environmental Impact Statement. The project is a comprehensive federal and state planning process to address Biological Opinion requirements for enhanced access to salmonid rearing habitat and increased passage for adult salmonids and sturgeon. In fiscal year 2018/19, Metropolitan continued to work with the Lead Agencies (DWR and Reclamation) and local stakeholders to review and provide input to the draft Science Plan, and the Final EIR/EIS, which was released on June 7, 2019. The Lead Agencies also completed construction of the Fremont Weir Adult Fish Passage Modification Project and began operating the modified fish ladder in January 2019.

The Tule Red Tidal Restoration Project will return tidal water to 600 acres of habitat to protect Delta smelt, longfin smelt and Chinook salmon

Photo courtesy DWR



Metropolitan continued working with the State and Federal Contractors Water Agency and DWR to develop the Tule Red Tidal Restoration Project. The project will ultimately enhance and restore more than 600 acres of tidal and subtidal wetlands in the Suisun Marsh and provide benefits to native fish species. The work involves breaching a natural berm to allow for full daily tidal exchange through the interior of the project site and creation of a network of channels to convey water across the marsh plain. Construction of the interior channels and marsh habitat was completed in fall 2018. Final construction activities and breaching of the outer berm are scheduled to be completed in late 2019.

Municipal Water Quality Investigations Program

Metropolitan continues to support DWR's Municipal Water Quality Investigations Program, which implements water quality monitoring and modeling studies in the Delta and the State Water Project facilities. In fiscal year 2018/19, this program conducted routine water quality monitoring for drinking water quality constituents throughout the Delta, operated five real-time water quality monitoring stations, completed seasonal water quality forecasts, and conducted pre-habitat restoration baseline water quality monitoring in the Cache Slough watershed. The MWQI Program also conducted a monitoring study to evaluate the degradation of an herbicide used to treat aquatic weeds in Clifton Court Forebay.

Delta Water Quality Studies

Metropolitan continues to work with the State Water Contractors and other stakeholders to support studies and management actions that address the impact of nutrients, contaminants and other water quality stressors impacting native species in the Delta watershed. One activity Metropolitan currently participates in is the Delta Regional Monitoring Program. In fiscal year 2018/19, the Delta RMP conducted water quality monitoring studies for pesticides and toxicity, nutrients and mercury.

Battle Creek Salmon and Steelhead Restoration Project

The Battle Creek Salmon and Steelhead Restoration Project is one of the largest cold water fish restoration efforts in North America. It is a partnership project between Pacific Gas and Electric Company, Reclamation, USFWS, National Marine Fisheries Service and California DFW. Metropolitan has supported and provided financial assistance towards the restoration project.

Once completed, the project will have restored almost 50 miles of habitat in Battle Creek and Battle Creek tributaries within the Sacramento River watershed for threatened and endangered winter-and spring-run Chinook salmon and steelhead, while maintaining the continued production of hydroelectric power at the Battle Creek Hydroelectric Project. Construction is anticipated to be complete by 2023.

Butte Creek Bypass Project

In fiscal year 2018/19, Metropolitan staff met several times with the Centerville Schoolhouse Workgroup, a diverse group of stakeholders committed to ensuring the future of Butte Creek's population of spring-run Chinook salmon. Staff toured Pacific Gas and Electric Company's DeSalba-Centerville Hydroelectric Project, and discussed scenarios and potential project improvements to ensure delivery of cold water, should Pacific Gas and Electric sell the facility. Staff also discussed potential science studies and habitat restoration projects in the lower river and provided suggestions to local water users on how to move habitat restoration projects forward.

Butte Sink and Sutter Bypass Project

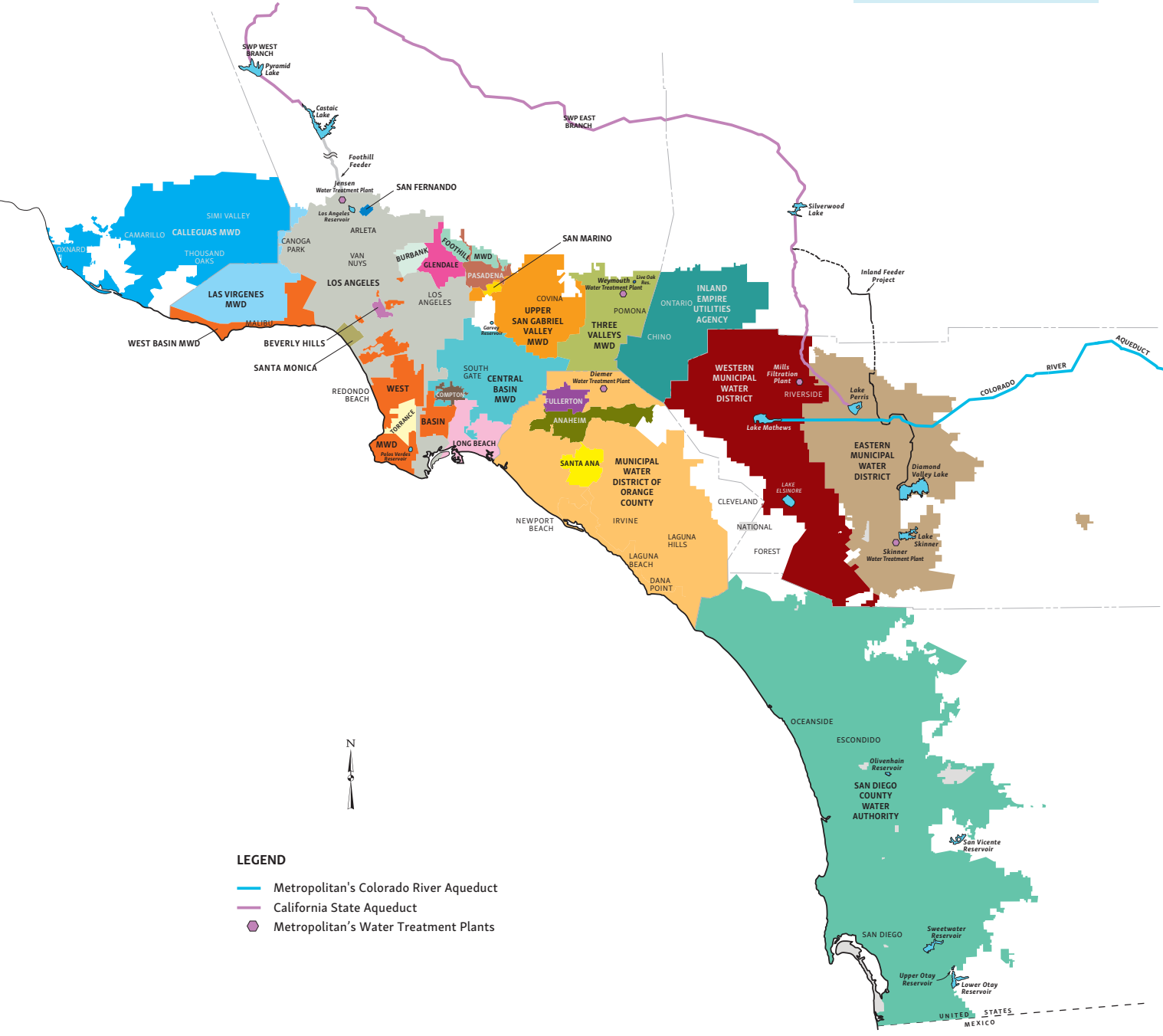
Metropolitan is a funding partner on the Butte Sink and Sutter Bypass Project. During fiscal year 2018/19, Metropolitan staff participated in the collaborative Sutter Bypass Workgroup process. Activities related to this effort included a tour of the Butte Sink and Sutter Bypass area and discussions of ongoing fish, zooplankton, and hydrology studies. These studies help stakeholders gain a better understanding of how fish benefit from the Sutter Bypass and Butte Sink habitats and inform what restoration actions are needed to improve salmon use and survival. Preliminary results suggest that fish using Butte Sink and Sutter Bypass habitats generally have higher growth rates than fish in the Sacramento and Feather Rivers.



ABOUT THIS REPORT

Every year, Metropolitan reports its accomplishments in water conservation, recycling and groundwater recharge to the State Legislature. To coincide with the report preparation, the MWD Act requires Metropolitan to “hold an annual public hearing... during which the district shall review its urban water management plan... for adequacy in achieving an increased emphasis on cost-effective conservation, recycling, and groundwater recharge.” The MWD Act also provides that Metropolitan “shall consider factors of availability, water quality, regional self-sufficiency, benefits for species and environment, the totality of life-cycle costs, including avoided costs, and short- and long-term employment and economic benefits.” While the Urban Water Management Plan is prepared and updated every five years according to state requirements (with the next update due in July 2021), Metropolitan hosts an annual December hearing to share progress on fiscal year plan objectives, and to receive public comments. Metropolitan held a public hearing on December 9, 2019 to receive public and stakeholder input. Comments received at the hearing are on file at Metropolitan and are available upon request.

METROPOLITAN'S MEMBER AGENCIES





City of Anaheim



City of Beverly Hills



City of Burbank



City of Compton



City of Fullerton



City of Glendale



City of Long Beach



City of Los Angeles



City of Pasadena



City of San Fernando



City of San Marino



City of Santa Ana



City of Santa Monica



City of Torrance



Calleguas Municipal Water District



Central Basin Municipal Water District



Eastern Municipal Water District



Foothill Municipal Water District



Inland Empire Utilities Agency



Las Virgenes Municipal Water District



Municipal Water District of Orange County



San Diego County Water Authority



Three Valleys Municipal Water District



Upper San Gabriel Valley Municipal Water District



West Basin Municipal Water District



Western Municipal Water District of Riverside County

Metropolitan is a voluntary cooperative of 26 member agencies with a 38-member board of directors. Metropolitan board and committee meetings are open to the public and broadcast live through mwdh2o.com.



P.O.Box 54153
Los Angeles, CA 90054-0153
mwdh2o.com
bewaterwise.com®



[/mwdh2o](https://www.facebook.com/mwdh2o)



[/mwdh2o](https://www.instagram.com/mwdh2o)



[/mwdh2o](https://twitter.com/mwdh2o)



[/mwdh2o](https://www.youtube.com/mwdh2o)



[/company/mwd](https://www.linkedin.com/company/mwd)