



2020 IRP Road Map

Member Agency Manager Meeting
April 17, 2020

Member Agency Managers Meeting

Slide 1

April 17, 2020

Overview

- COVID-19 Impacts on IRP 2020
- Roadmap to get back on track
- Next Steps
 - Drivers of Change discussion
 - Scenario Planning Whitepaper

Member Agency Managers Meeting

Slide 2

April 17, 2020

Progress Leading up to COVID -19 Social Distancing

- February 25 - IRP Committee Mtg. Kick-off
 - Introduced scenario planning approach
 - Identify major policy areas
- March 13 – MAMM
 - Anticipated process and outcomes
 - Scenario planning process overview
 - Stakeholder outreach approach

Member Agency Managers Meeting

Slide 3

April 17, 2020

Impacts of COVID -19 on IRP Process

- March 24 - IRP Committee Mtg. cancelled
 - Discussion on policy/needs/direction and scenario planning process did not occur
 - Metropolitan's non-essential staff begin telecommuting
- Revised stakeholder outreach approach
 - Scaled back comprehensive engagement plan that relied on face-to-face interaction
 - Focused on member/retail agencies and environmental organizations

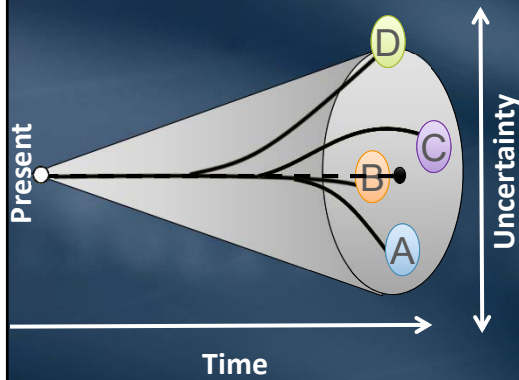
Member Agency Managers Meeting

Slide 4

April 17, 2020

Lessons from a 25-year Planning Cycle

“The future ain’t what it used to be” – Yogi Berra



- The future is not predictable
- Drivers that influence the future are uncertain
- Drivers have significant impact on water supply reliability

Member Agency Managers Meeting

Slide 5

April 17, 2020

Road Map for MAM Involvement



Step 1 – Identify Drivers of Change

WHY
do this

Building blocks to construct plausible future scenarios

HOW
will we do it

Answering questions like:

- What keeps you up at night?
- What is important to you and why?
- What are the uncertainties around the things you find important?

WHAT
is the outcome

List of factors and uncertainties that impact future water supply reliability

Member Agency Managers Meeting Slide 7 April 17, 2020

What do Drivers of Change Look Like?

Samples

70%
of total southern California water demand

Residential Water Use

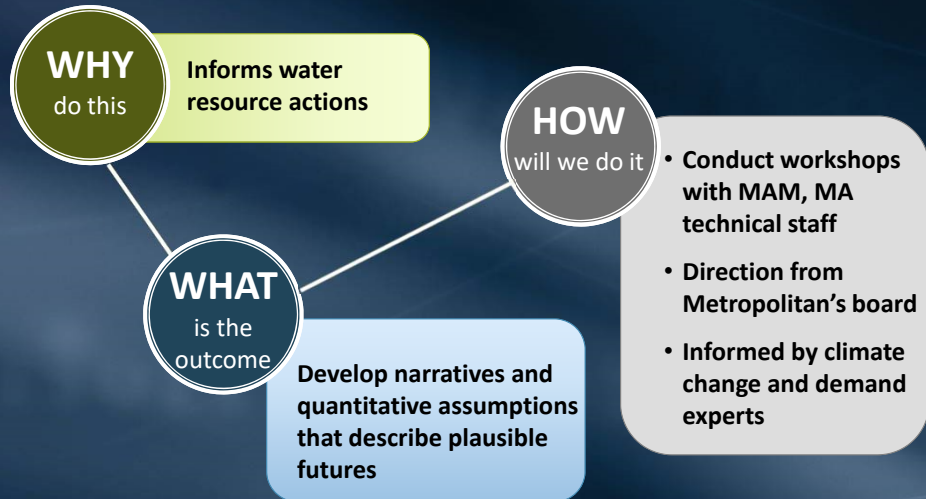
- Population
- Income levels
- Water use behaviors

Climate Change

- Precipitation patterns
- Temperature
- Sea level rise

Member Agency Managers Meeting Slide 8 April 17, 2020

Step 2 – Construct Learning Scenarios



Member Agency Managers Meeting

Slide 9

April 17, 2020

What does a Learning Scenario Look Like?

Sample

“Water Supply Challenges in a World of Awareness”

Southern California’s **economy thrives** over the next 25 years. **Population** and occupied housing rise. However, retail water consumers have **supported more efficient** building standards and water use habits and devices. There **is higher self-investment** in both indoor and outdoor water use efficiency, with less outdoor water irrigation needs, leading to sustained lower per-capita water use. Local supply production has been challenged due to impacts of **contaminants** on existing groundwater. In addition, both local and imported supplies are challenged by **climate change**, with the impacts of **increased temperatures** and decreased/changed **precipitation pattern** while increasing temperatures and changes in rainfall put increasing pressure on the remaining outdoor water use.

Member Agency Managers Meeting

Slide 10

April 17, 2020

Policy Pit Stop - Directional

- What level of regional reliability are we seeking collectively? What is Metropolitan’s role and who is responsible to backstop supplies?
- How much redundancy do we want?
- How do we define reliability, resiliency, sustainability?
- Are there implications to Metropolitan’s revenue collection?

Member Agency Managers Meeting Slide 11 April 17, 2020

Step 3 – Develop Resource Mix

WHY
Do this

WHAT
is the outcome

Need a plan that describes the investments needed to achieve policy goals

HOW
will we do it

- Utilize Metropolitan’s existing and new modeling tools
- Quantify and analyze cost and policy directives across each scenario
- Identify common and unique actions
- Develop performance measures for various actions and resource mixes

A resource mix that includes data on timing of actions, estimated cost information and trade-offs for each future scenario

Member Agency Managers Meeting Slide 12 April 17, 2020

What does a Resource Mix Look Like?

Scenario
A

Scenario
B

Scenario
C

Scenario
D

- Analyze and quantify scenario elements
- Determine outcomes over the next 25 years
 - Supply, demand, and storage
- Evaluate resource mixes and actions against performance measures:
 - Reliability measures, cost measures, resilient measures

Actions

Actions

Actions

Actions

Member Agency Managers Meeting
Slide 13
April 17, 2020

Policy Pit Stop - Implementation

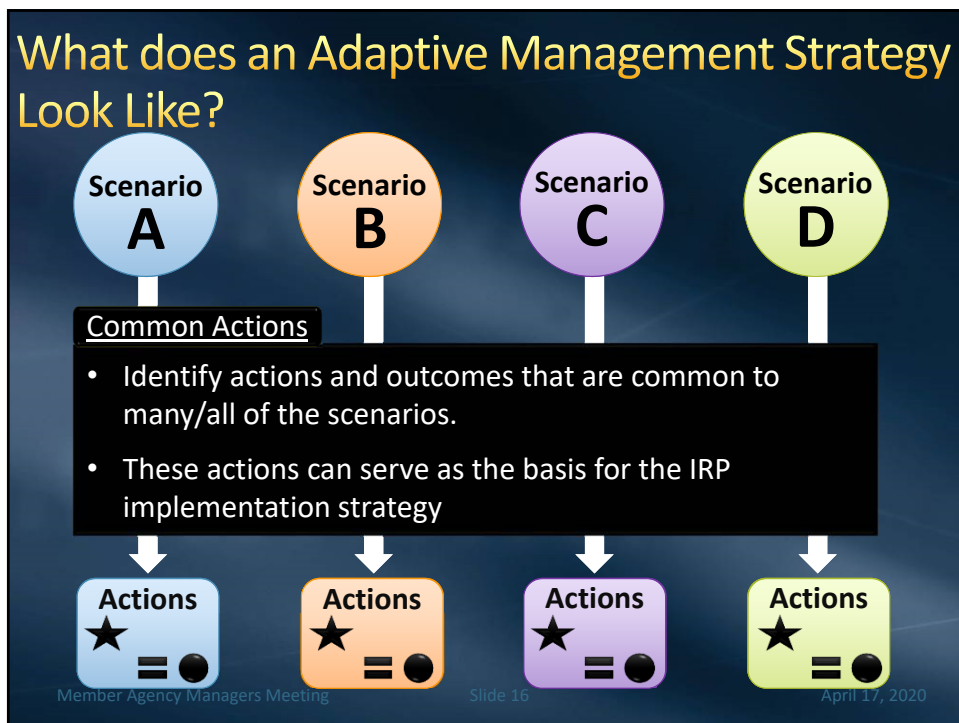
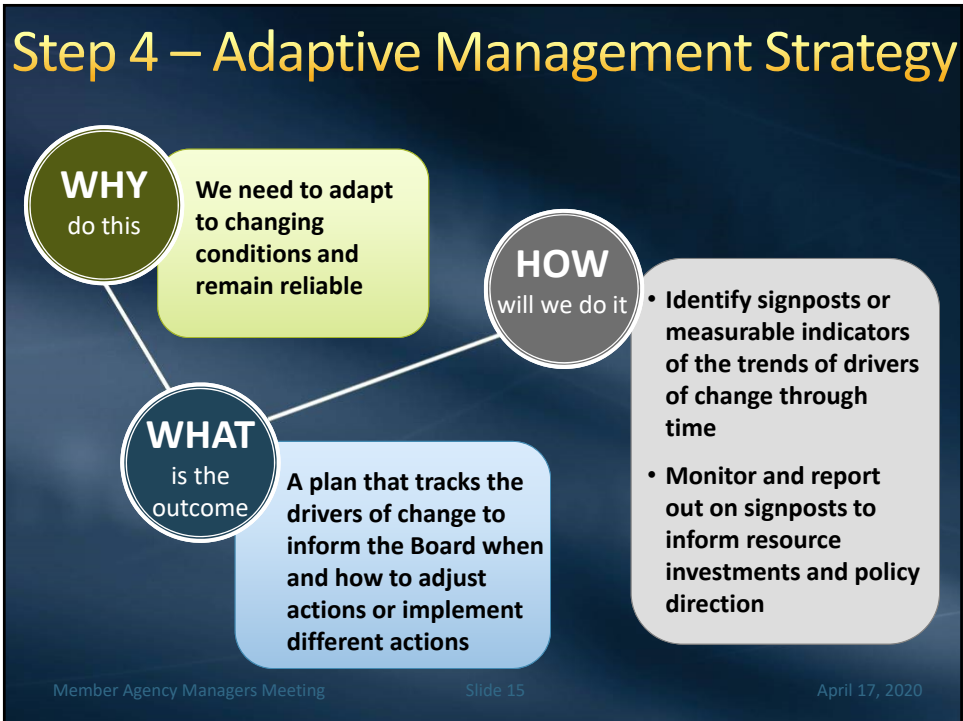
Scenarios

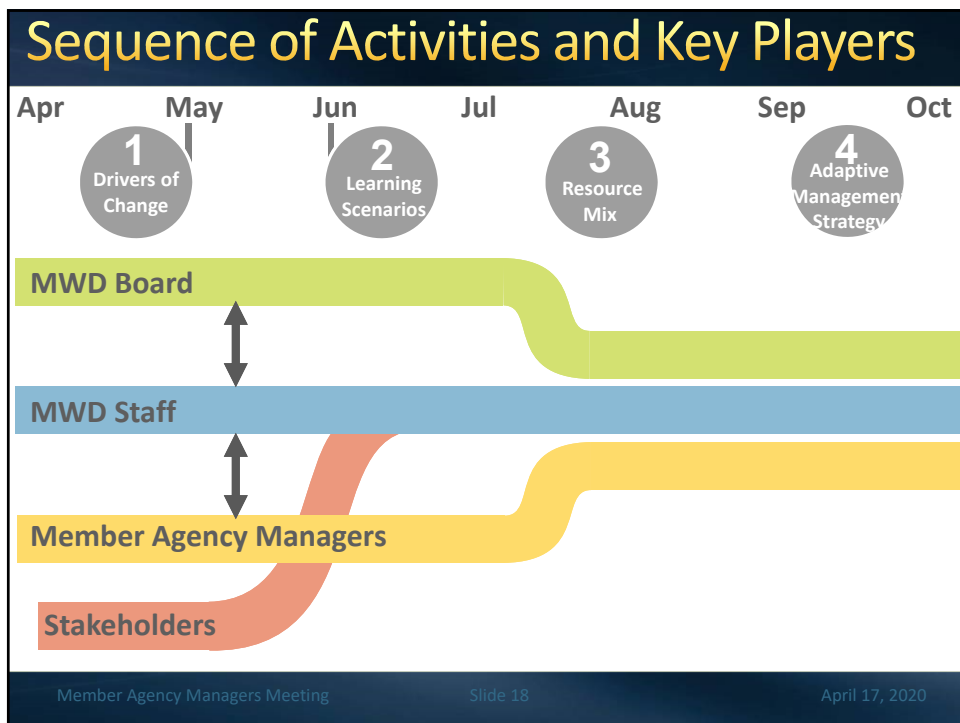
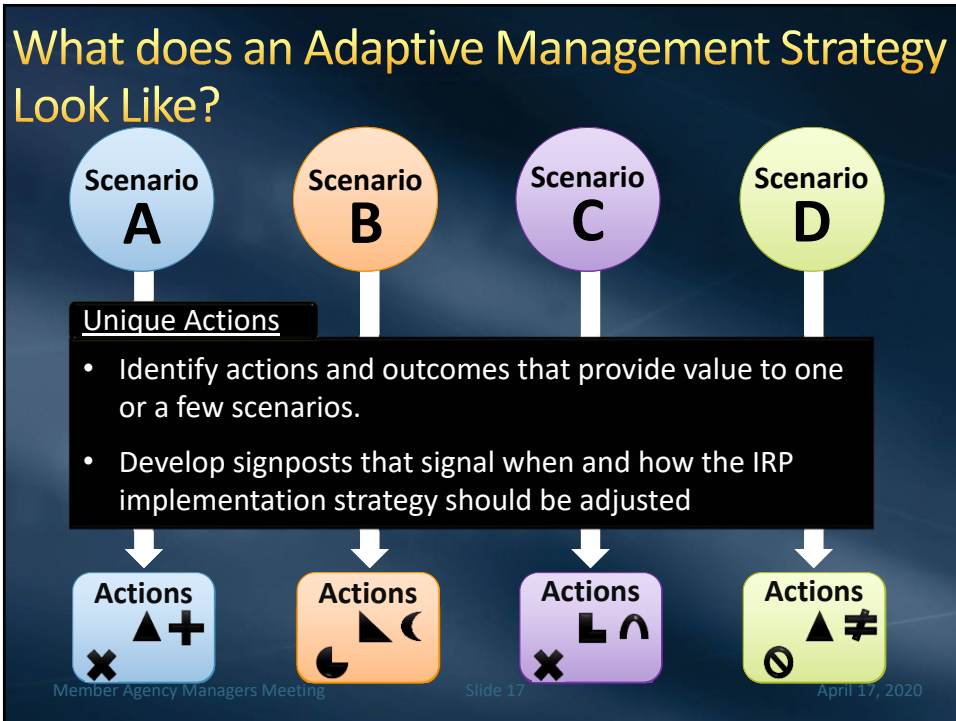
Policy Considerations

Resource Mix

- Who is responsible to achieve the elements of the future scenario?
- How well does the resource mix achieve the reliability goal? Does it overachieve, if so, at what additional cost?
- What are the tradeoffs if the reliability goal is not achieved?
- Are there implications to Metropolitan’s financial structure?

Member Agency Managers Meeting
Slide 14
April 17, 2020





Proposed Outreach Schedule

Apr 17 MA Managers meeting

May 5 MA Regional Urban Water Management Plan kick-off
May 13 MA Technical Staff workshop
May 15 MA Managers meeting
May 20 Stakeholder workshop (online)

Jun 10 MA Technical Staff workshop
Jun 12 MA Managers meeting

Jul 15 MA Technical Staff workshop
Jul 17 MA Managers meeting

Aug 19 MA Technical Staff workshop
Aug 21 MA Managers meeting

Member Agency Managers Meeting Slide 199 April 17, 2020

Next Steps

1 Identify Drivers of Change

MAM Drivers of Change
On-Ramp Next Month

Policy Pit Stop



Member Agency Managers Meeting

Slide 21

April 17, 2020