



THE METROPOLITAN WATER DISTRICT
OF SOUTHERN CALIFORNIA

Board Report

Safety, Regulatory, and Training Section

• Environmental, Health, and Safety Report for the 4th Quarter of 2024

Summary

The Safety, Regulatory, and Training Section in the Office of Safety, Security and Protection is responsible for overseeing Metropolitan’s compliance with environmental, health and safety (EHS) regulations and procedures. This report provides an update on Metropolitan’s EHS program activities and key initiatives for the period of October through December 2024; the next quarterly EHS report will be issued in April 2025.

Purpose

Informational

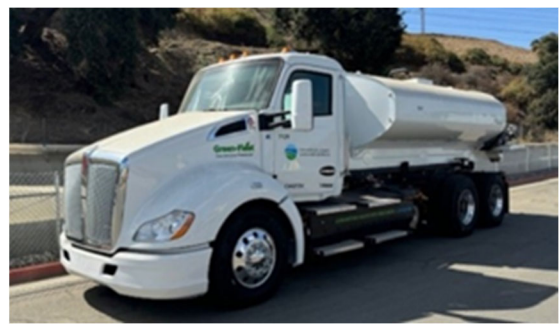
Detailed Report

Employee Recognition for Safety

Metropolitan’s Safety, Regulatory, and Training Section continues to collaborate with the National Safety Council to develop an employee recognition program. Human Resources will select a vendor for employee service awards that will include the option to award employees for their safety-related efforts. Recognizing employees for their safety-related efforts can greatly enhance workplace morale and reinforce a culture of safety.

Advanced Clean Fleet Initiative

The Environmental team gathered information and feedback regarding Zero Emission Vehicles (ZEV) and infrastructure by visiting the Los Angeles County Sanitation Districts Transfer Facility to view their recent ZEV purchases including a Class 8 cargo tanker truck and water truck. In addition, staff participated at the Electric Power Research Institute (EPRI) EVs2Scale2030 meeting to preview interactive EV planning tools related to grid capacity and location. The gathered information supports Metropolitan’s ZEV transition planning and regulatory efforts.



LACSD ZE Cargo Tanker Truck and Water Truck

Board Report Environmental, Health, and Safety Report for the 4th Quarter of 2024

Air Quality

Staff submitted applications to the Mojave District Air Quality Management District to permit a flexible abrasive blasting system that includes a booth, dust collector, abrasive blaster, and a compressor. The requested permits will support critical infrastructure projects, shutdowns, and maintenance and repair at various locations throughout Gene, Intake, and Iron.



Abrasive blasting booth and dust collector to be used at Desert facilities

Key EHS Performance Measures

EHS KPIs (July through September 2024)			
KPI	Type	Goal	Result ¹
Safety Inspection Completion Rate	Leading	90%	98%
Mandatory Safety Training Completion Rate	Leading	90%	90%
Toolbox Completion Rate (every 10 days)	Leading	90%	90%
Safety Committee Meeting Rate (once per quarter)	Leading	90%	100%
Recordable Injuries	Lagging	0	9
Regulatory Violations	Lagging	0	1
Reportable Chemical Spills	Lagging	0	3

¹ Green shading denotes goal met and yellow shading denotes goal was not met.

For this quarter, all goals for leading KPIs were achieved with ≥ 90 percent completion rate. Metropolitan facilities recorded a total of three reportable spills. Two were minor chlorine gas releases related to tanker truck connection/disconnection activities. Another was a minor ozone release that occurred because of a combination of aged gaskets and highly variable temperature swings.

Board Report Environmental, Health, and Safety Report for the 4th Quarter of 2024

Regulatory Agency Inspections

During the July through September 2024 period, Metropolitan facilities underwent a total of 20 regulatory agency inspections, conducted by local air quality, sanitation, health, and fire departments. Metropolitan received one violation related to fire sprinkler testing. Note that October through December regulatory inspections will be included in the next EHS report issued in April 2024.

Cal/OSHA Inspections

During the July through September 2024 period, there were no Cal/OSHA inspections. Note that October through December 2024 Cal/OSHA inspections will be included in the next EHS report issued in April 2025.