



## Organization Charts

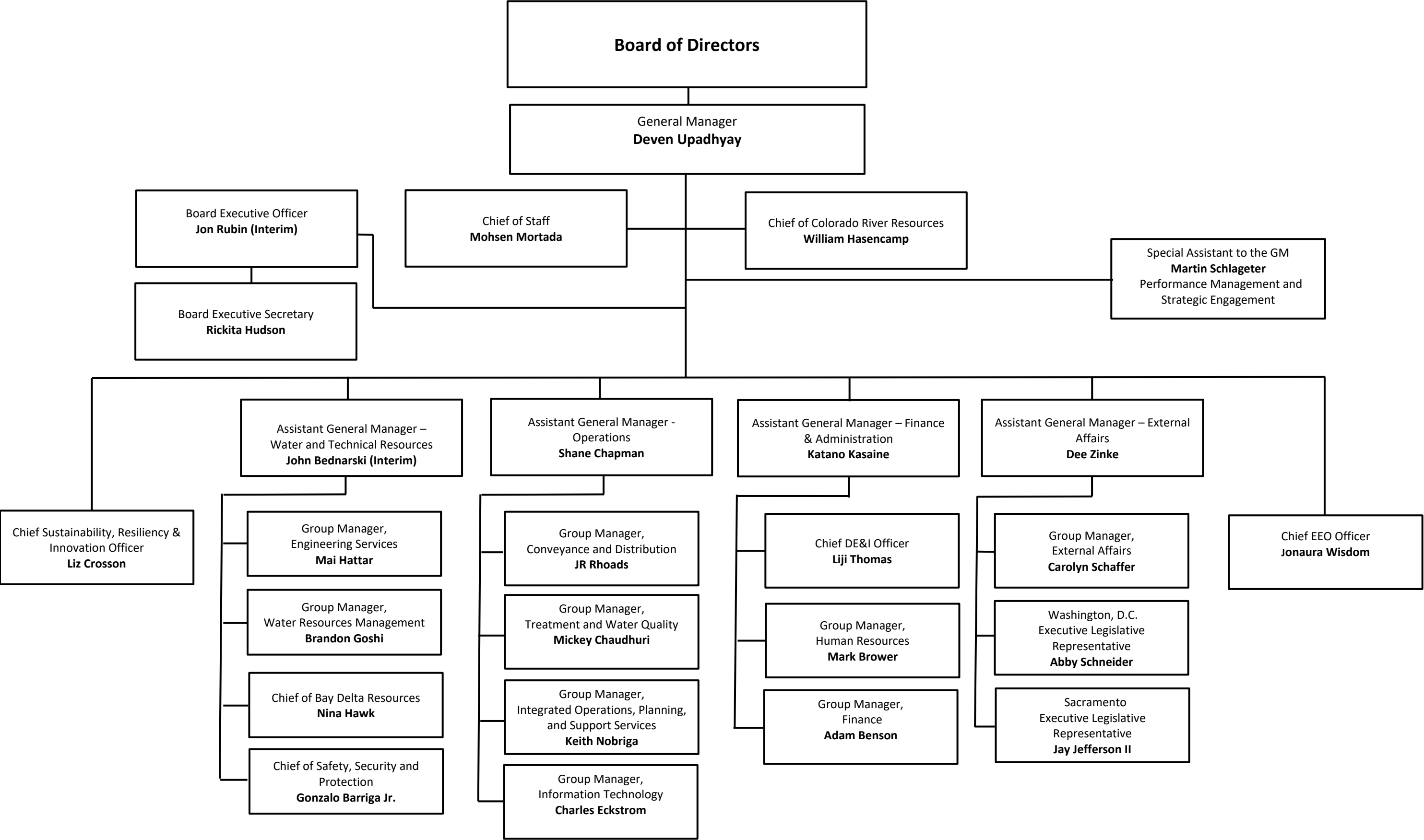
Charts represent staffing as of August 11, 2025

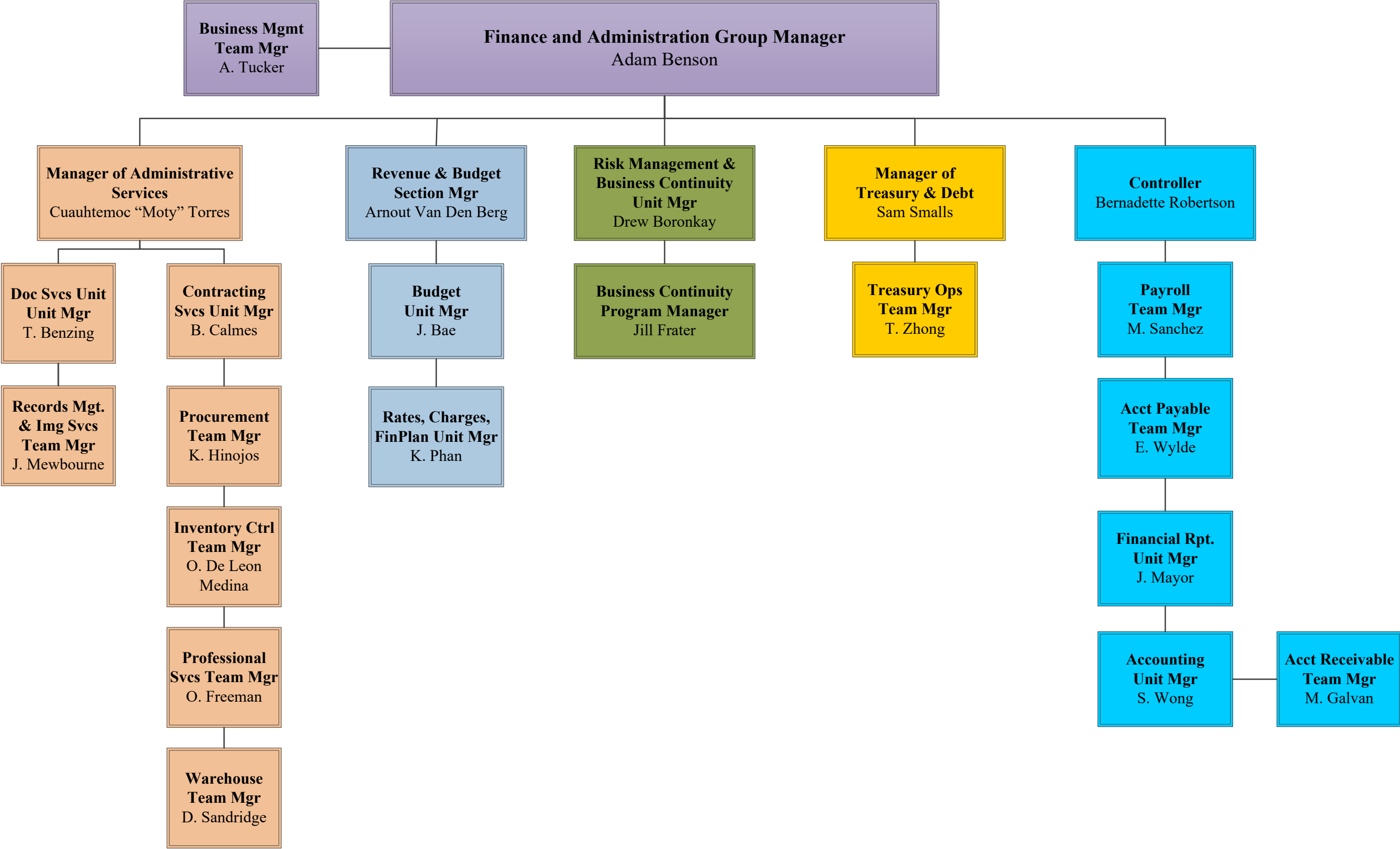
In most cases, charts represent organizations down to Team Manager level.

For INTERNAL use only.

Questions? Contact:  
Susan Chan  
[schan@mwdh2o.com](mailto:schan@mwdh2o.com)

OFFICE OF THE GENERAL MANAGER

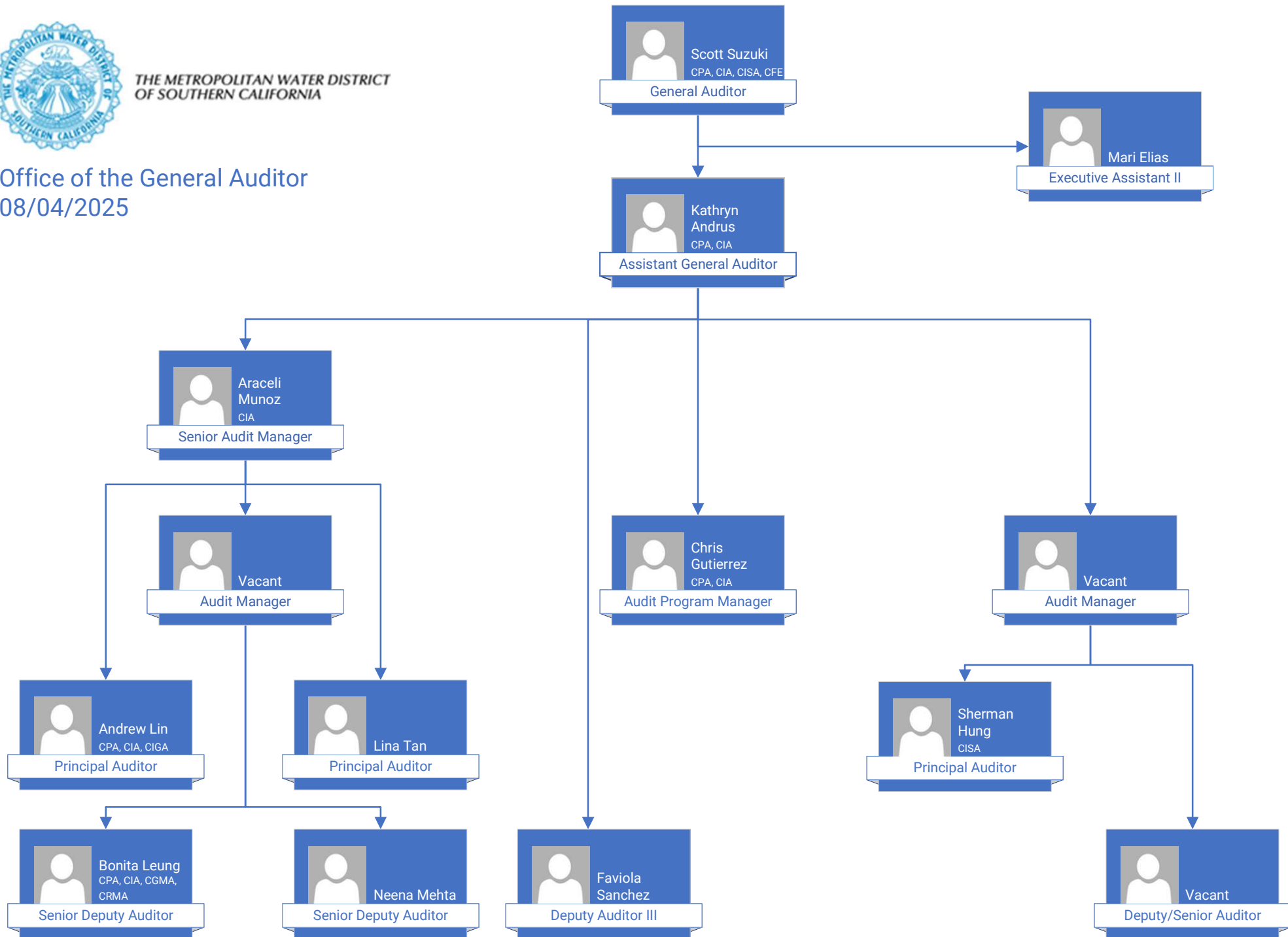






THE METROPOLITAN WATER DISTRICT  
OF SOUTHERN CALIFORNIA

Office of the General Auditor  
08/04/2025

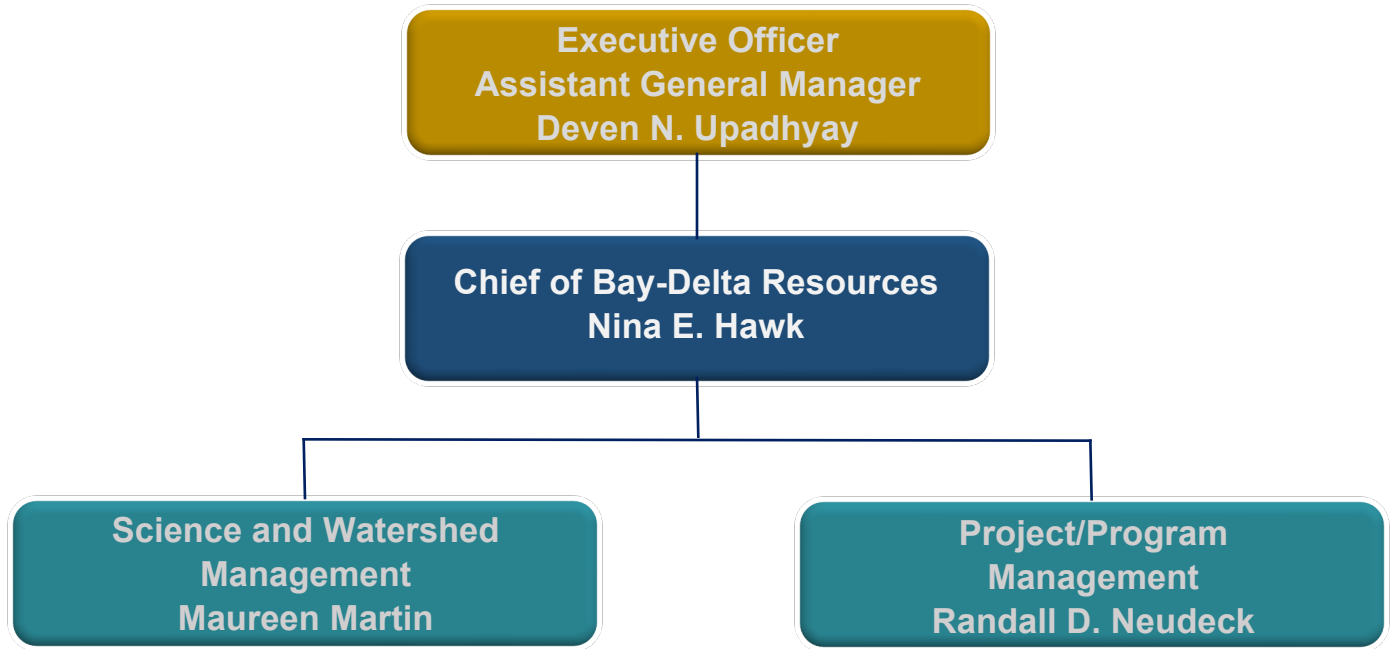


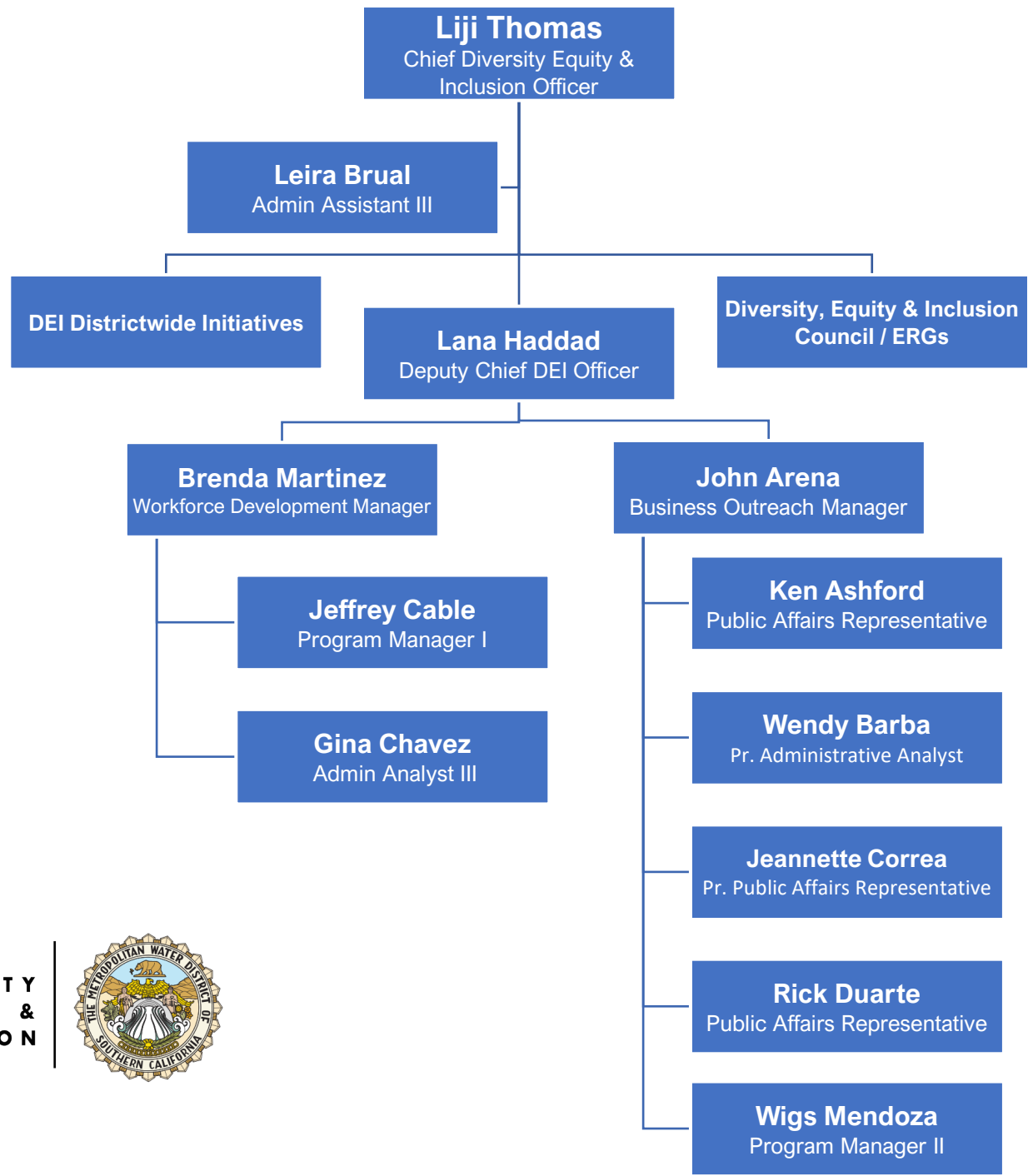
**Executive Officer  
Assistant General Manager  
Deven N. Upadhyay**

**Chief of Bay-Delta Resources  
Nina E. Hawk**

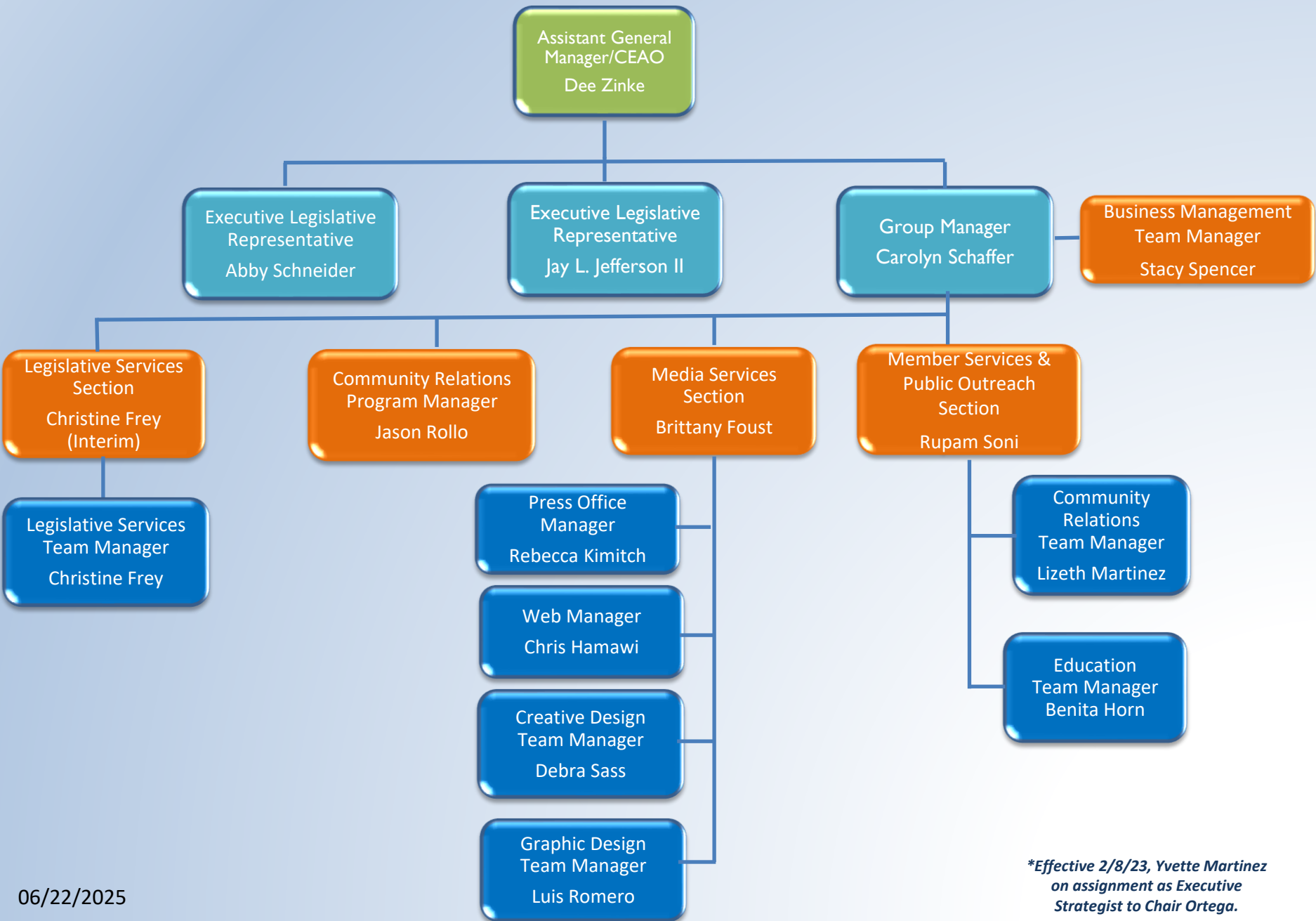
**Science and Watershed  
Management  
Maureen Martin**

**Project/Program  
Management  
Randall D. Neudeck**

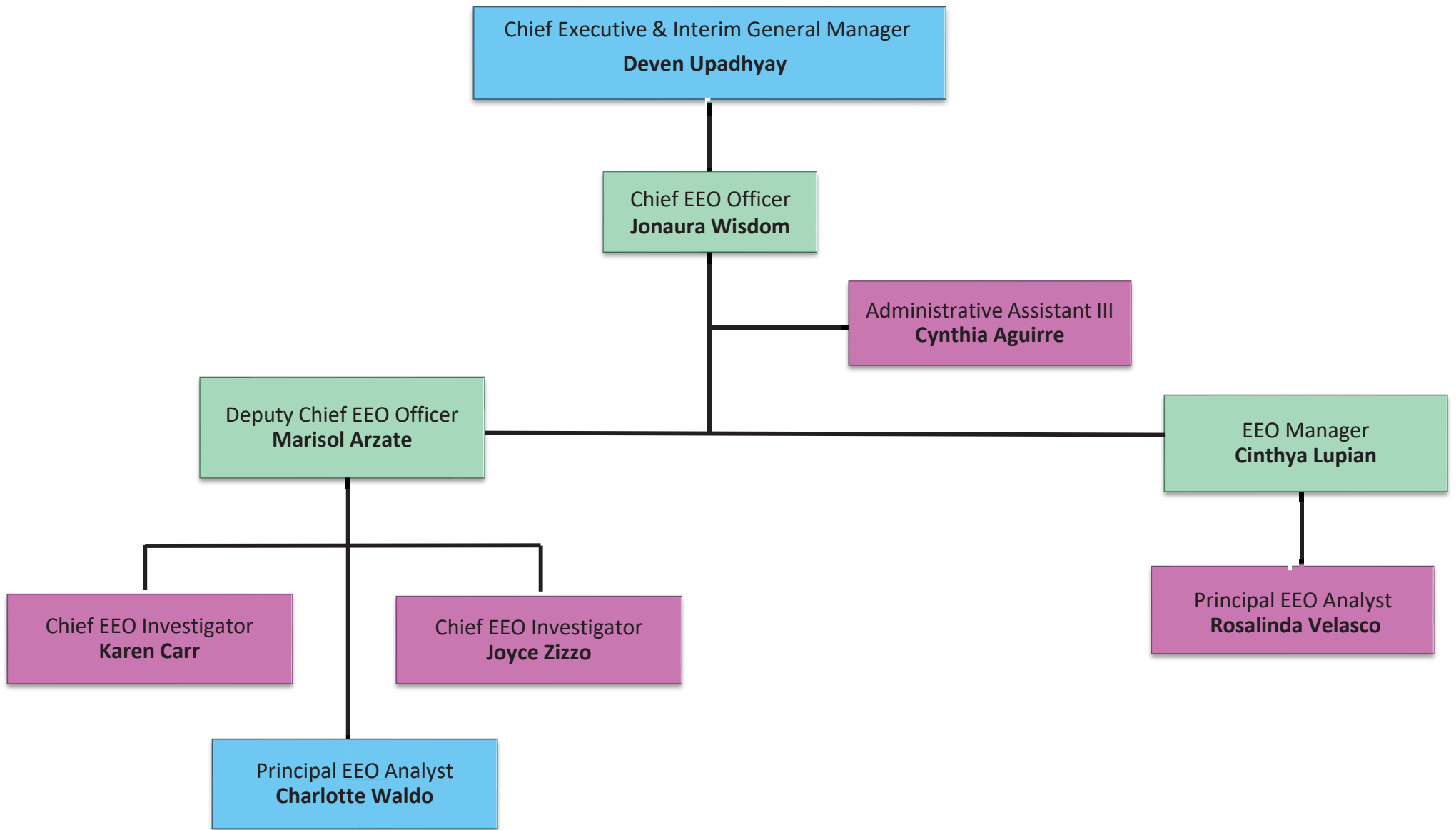




# External Affairs



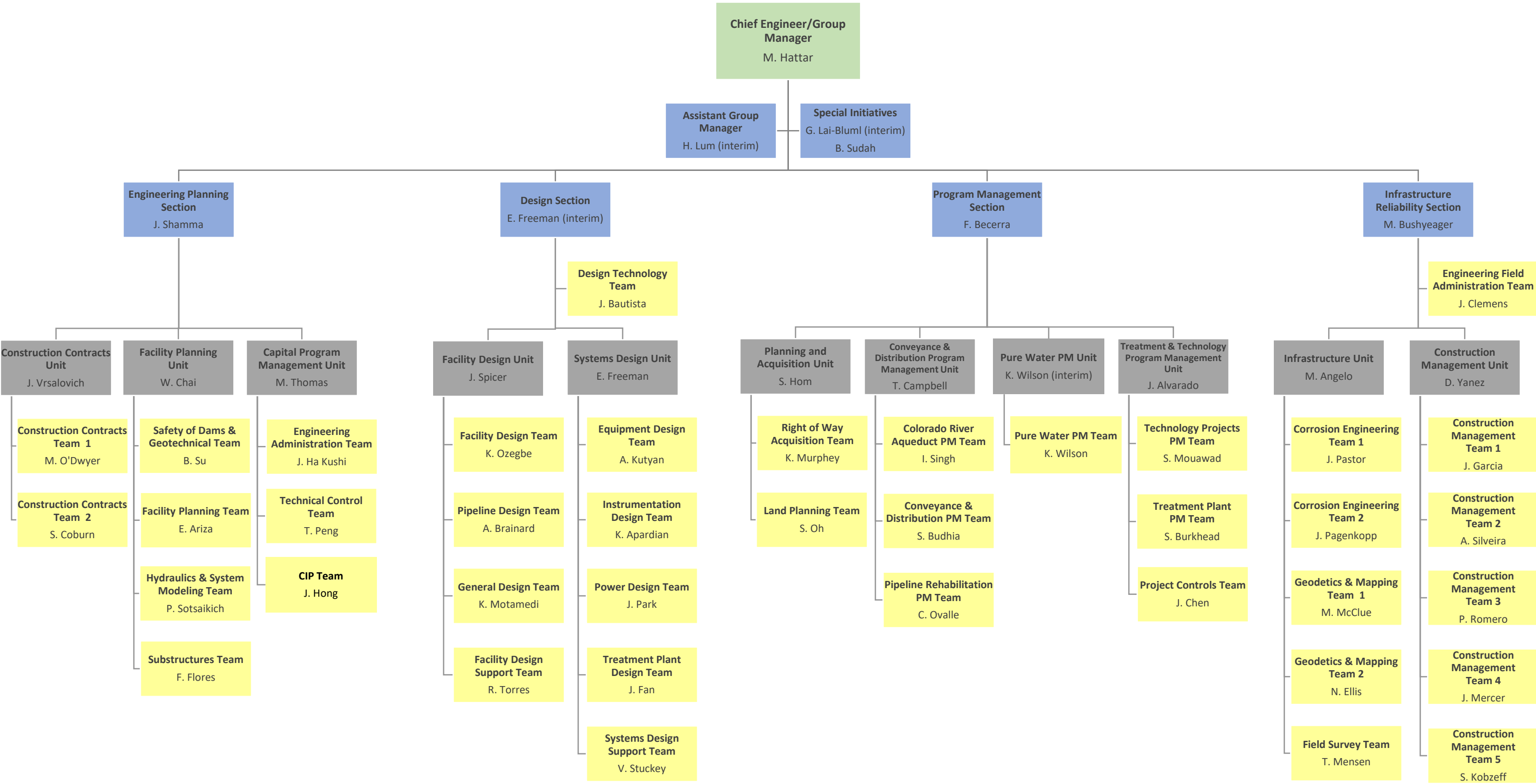
*\*Effective 2/8/23, Yvette Martinez  
on assignment as Executive  
Strategist to Chair Ortega.*



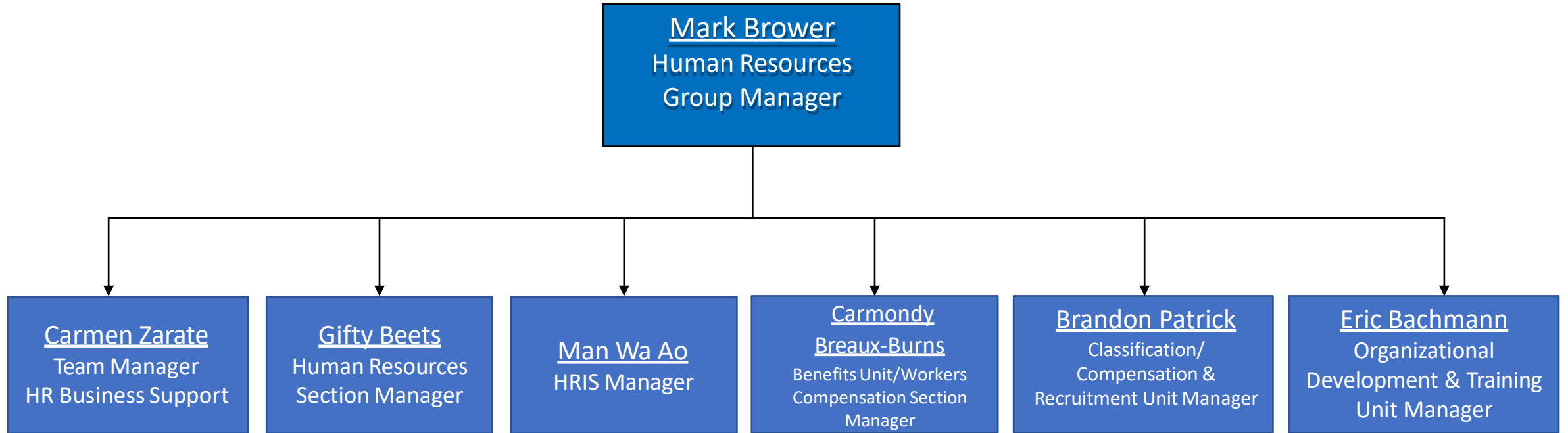


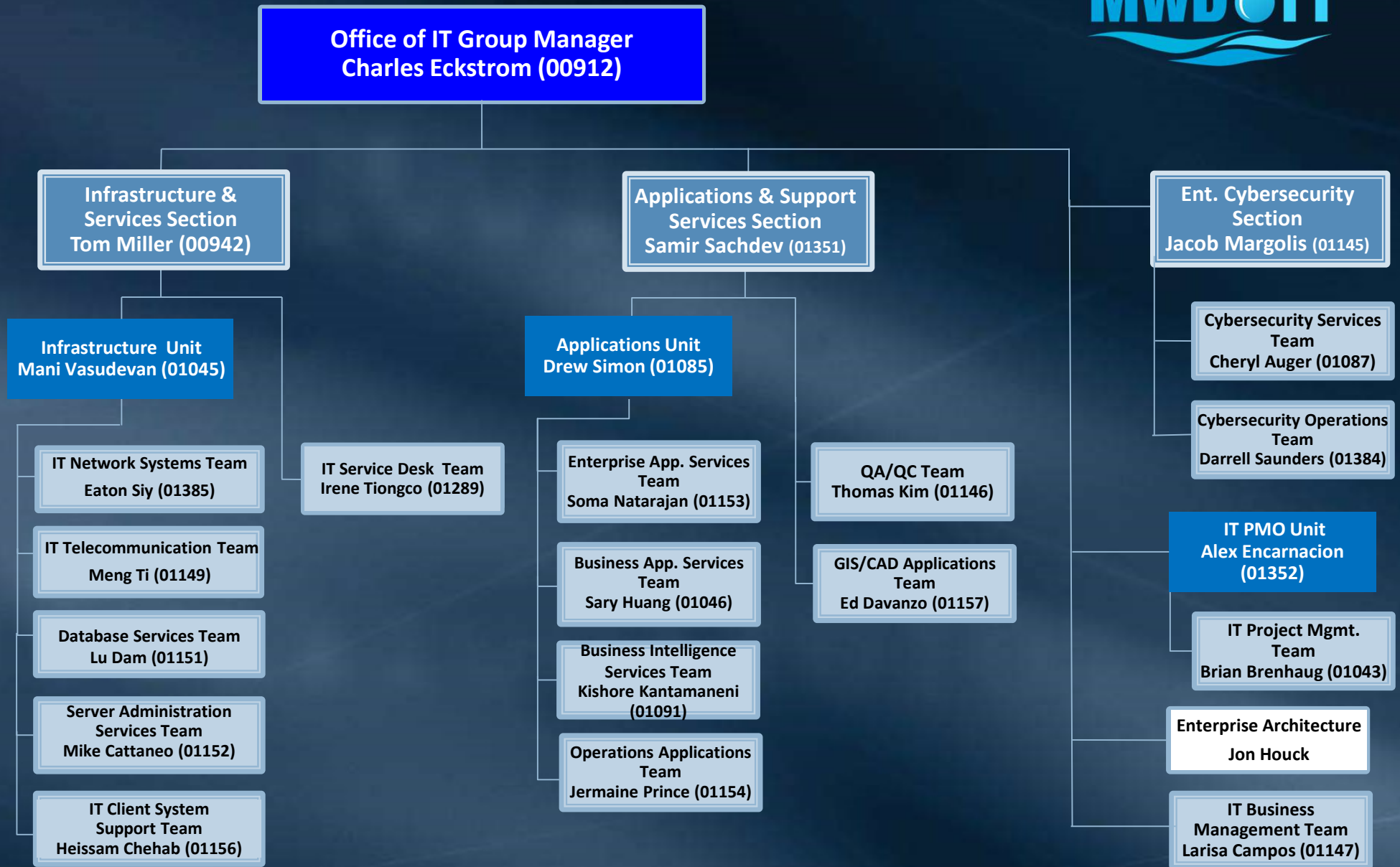
# Engineering Services Group Organization Chart

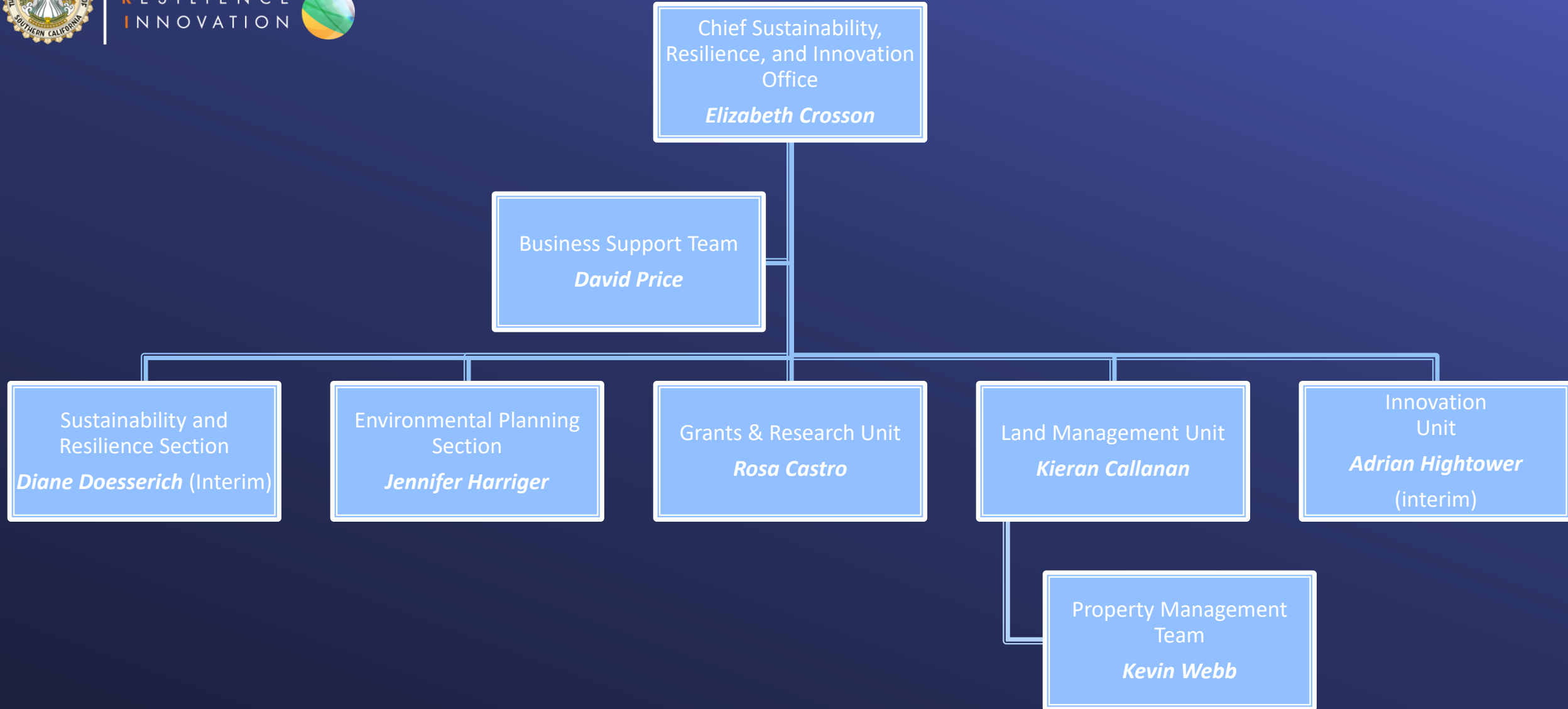
July 30, 2025

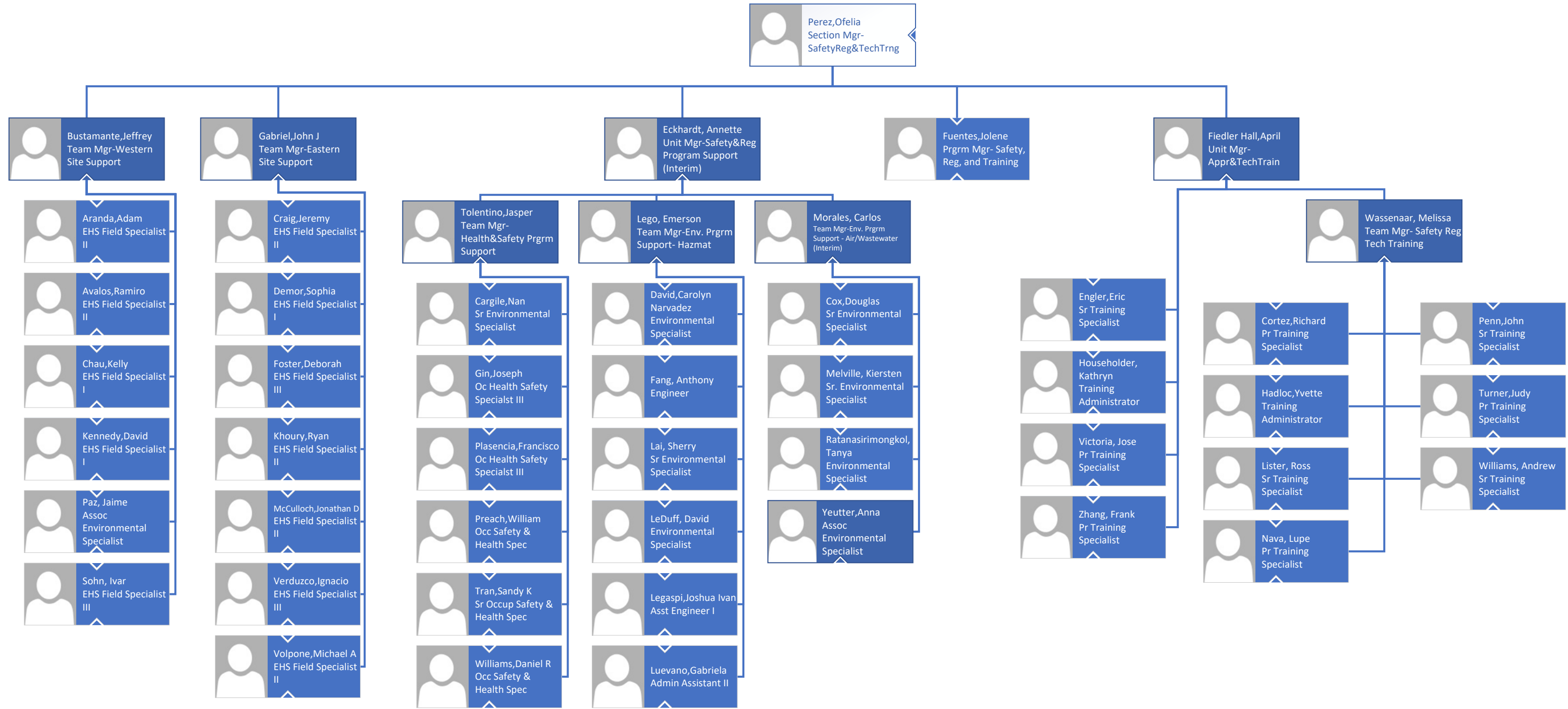


# Human Resources Organizational Chart

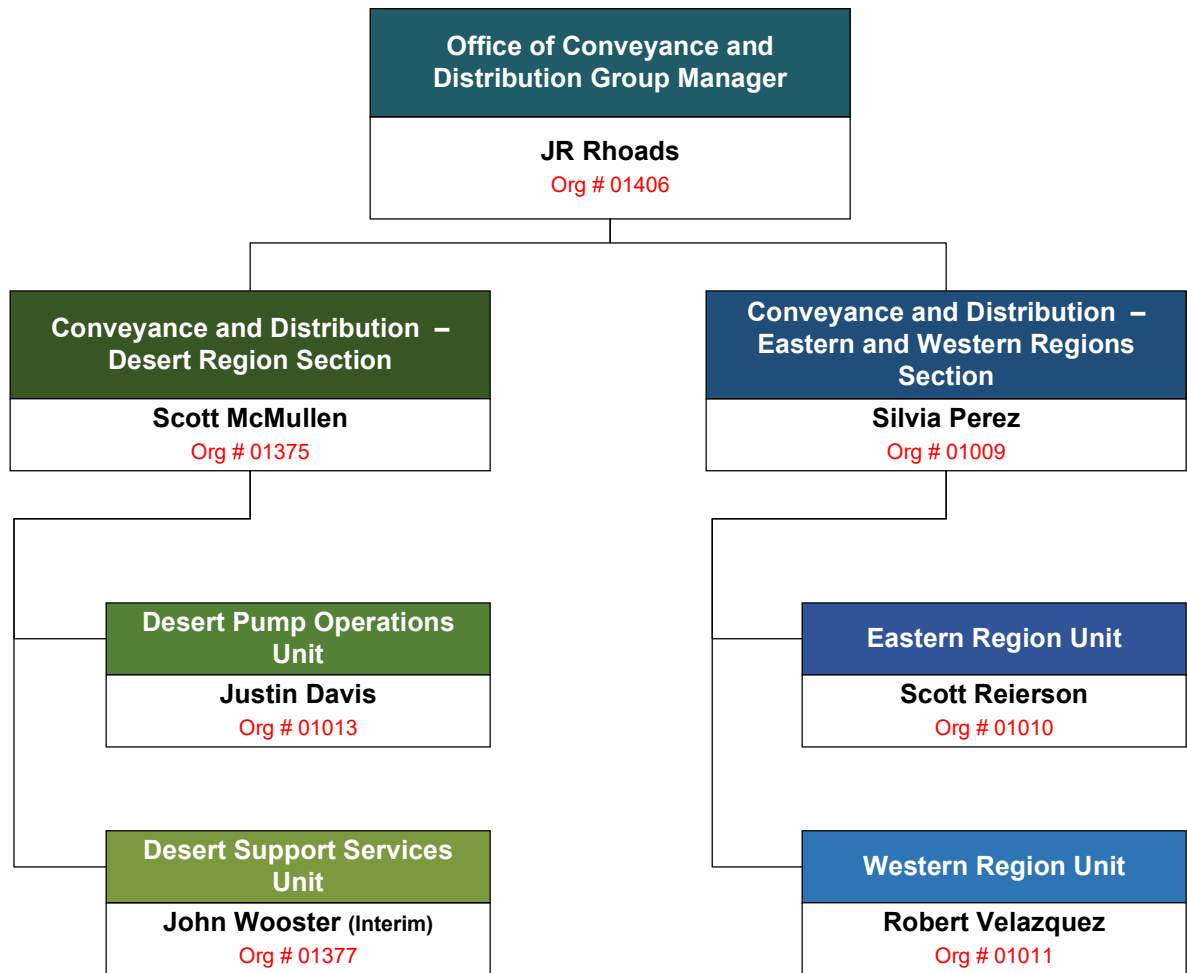




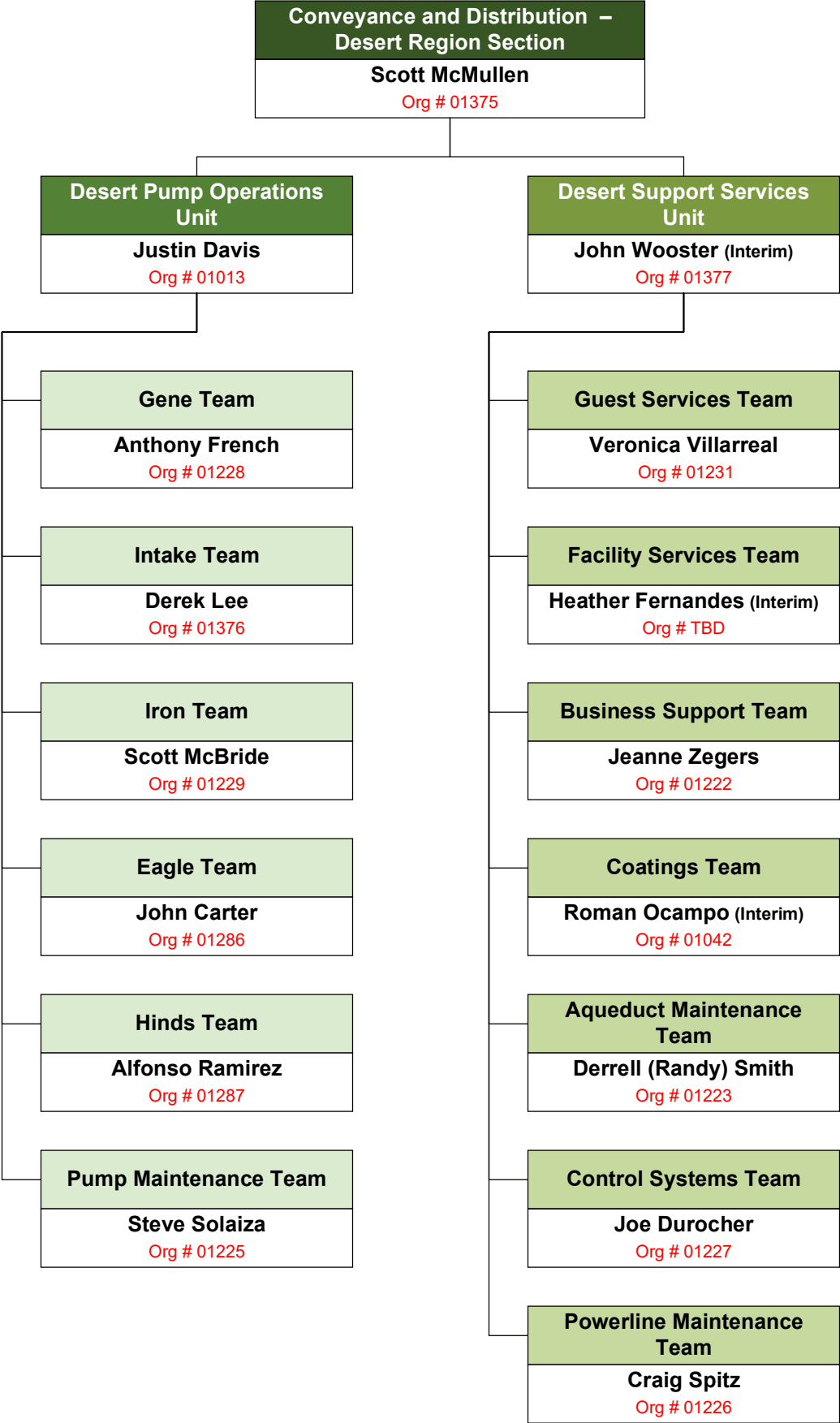




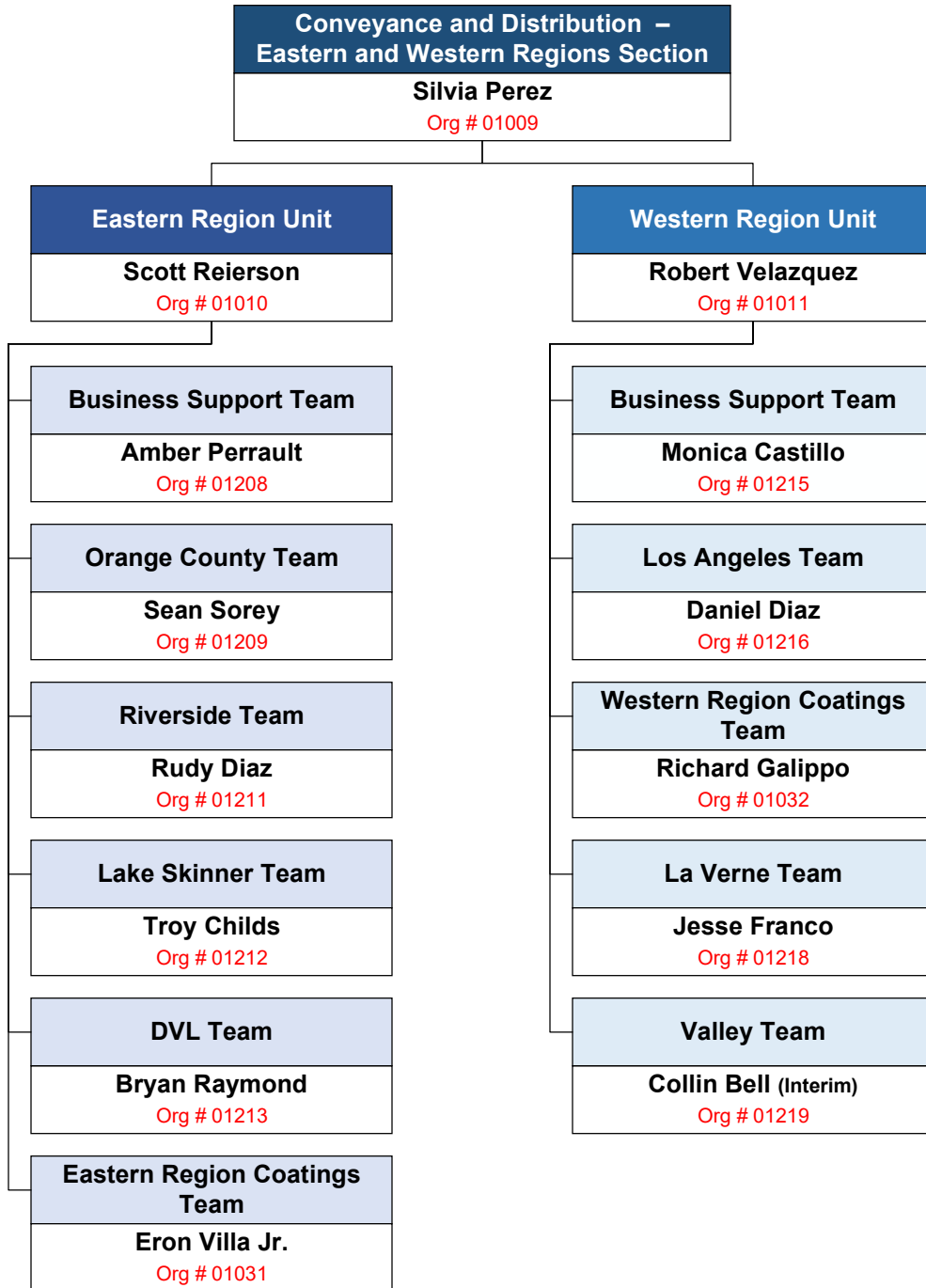
## CONVEYANCE AND DISTRIBUTION GROUP



CONVEYANCE AND DISTRIBUTION GROUP  
DESERT REGION SECTION

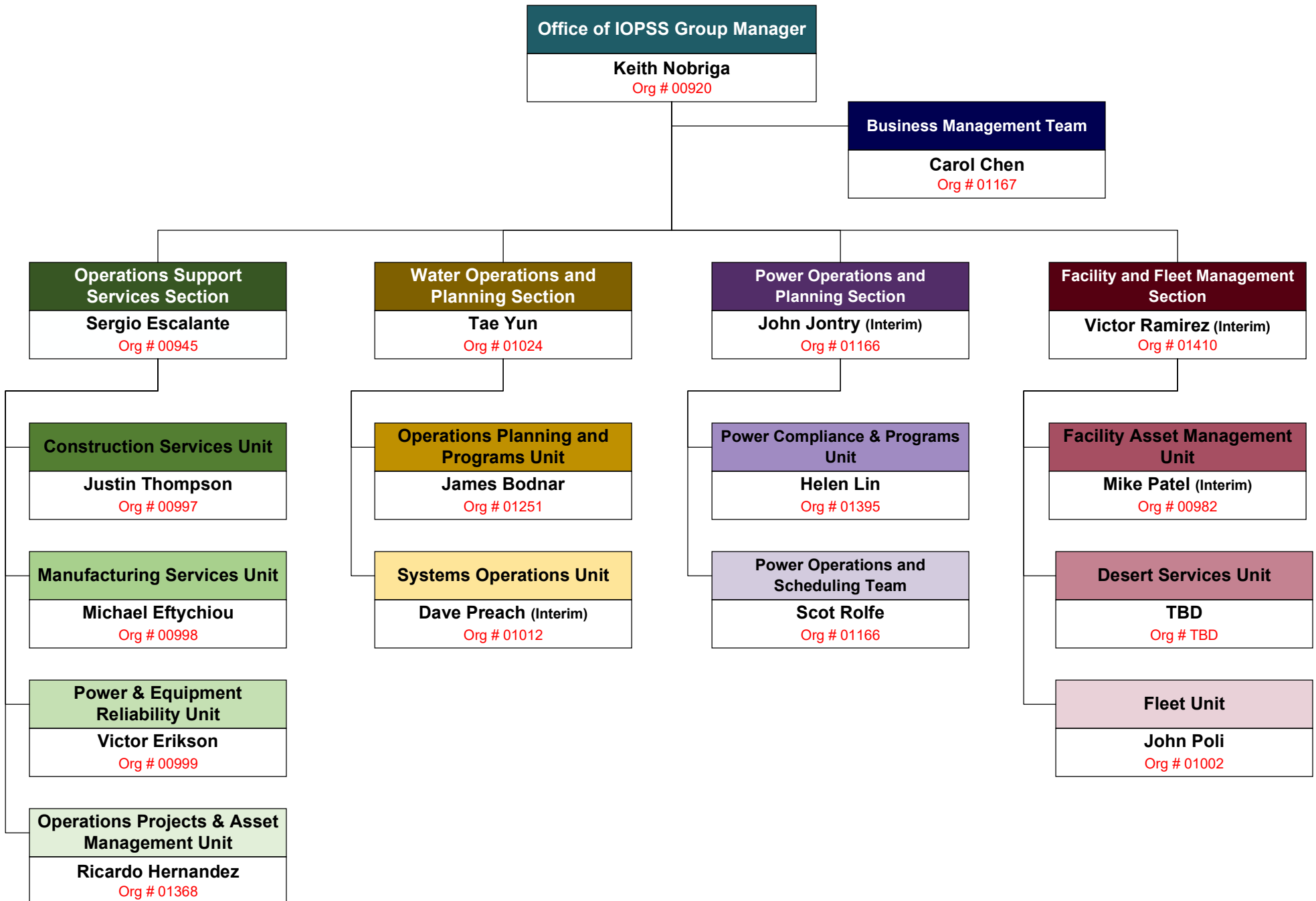


**CONVEYANCE AND DISTRIBUTION GROUP  
EASTERN AND WESTERN REGIONS SECTION**

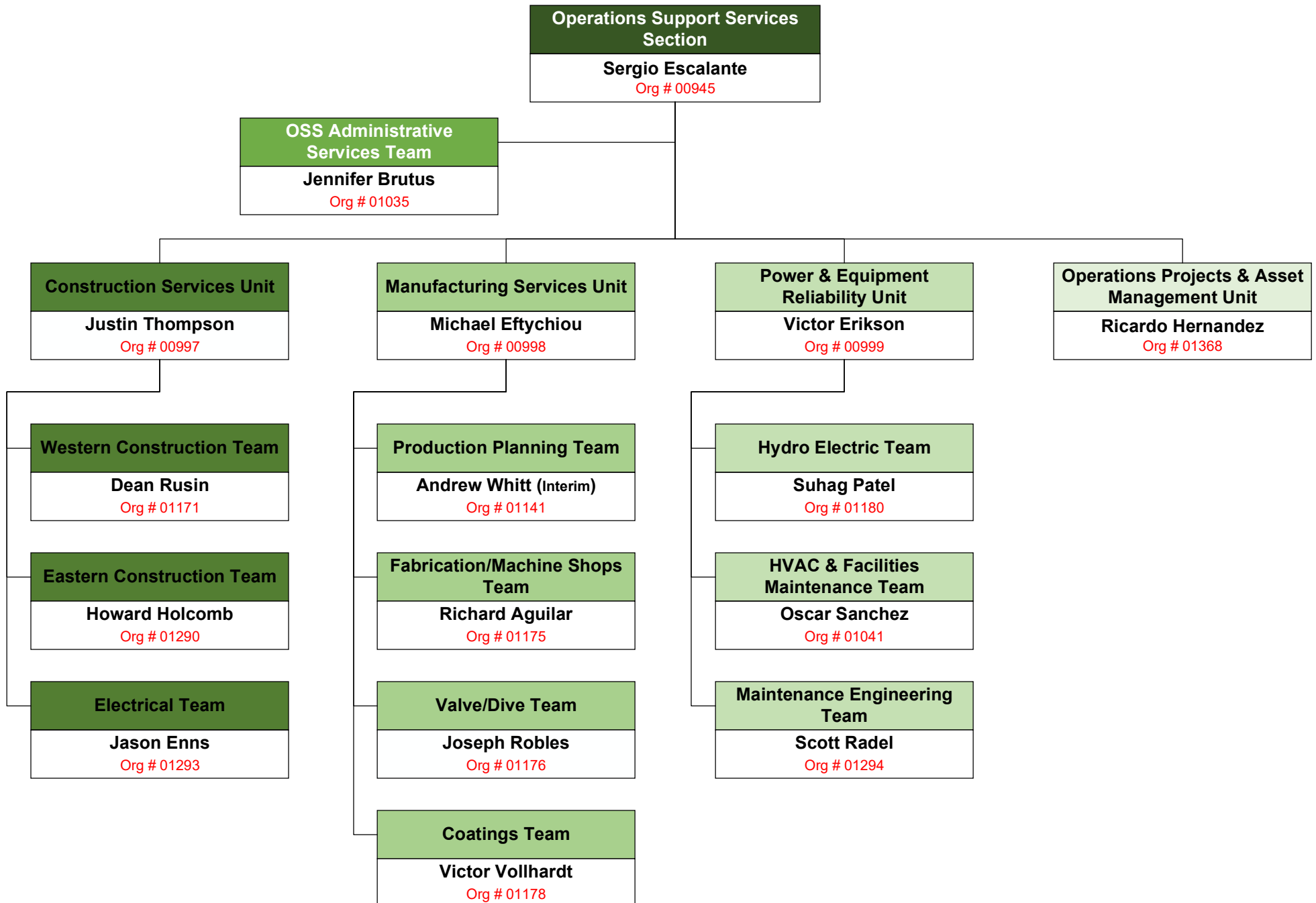




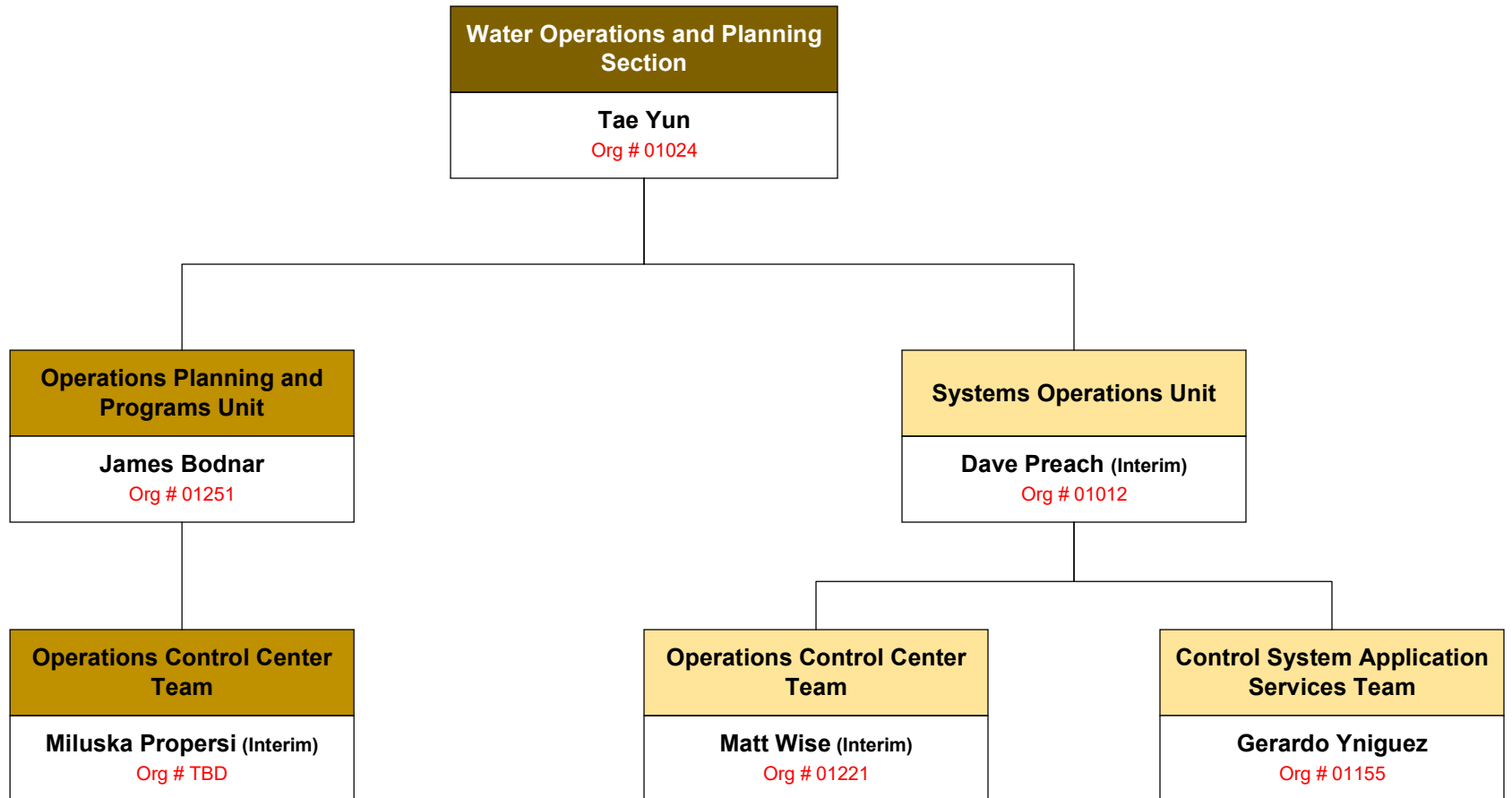
## INTEGRATED OPERATIONS, PLANNING AND SUPPORT SERVICES GROUP (01409)



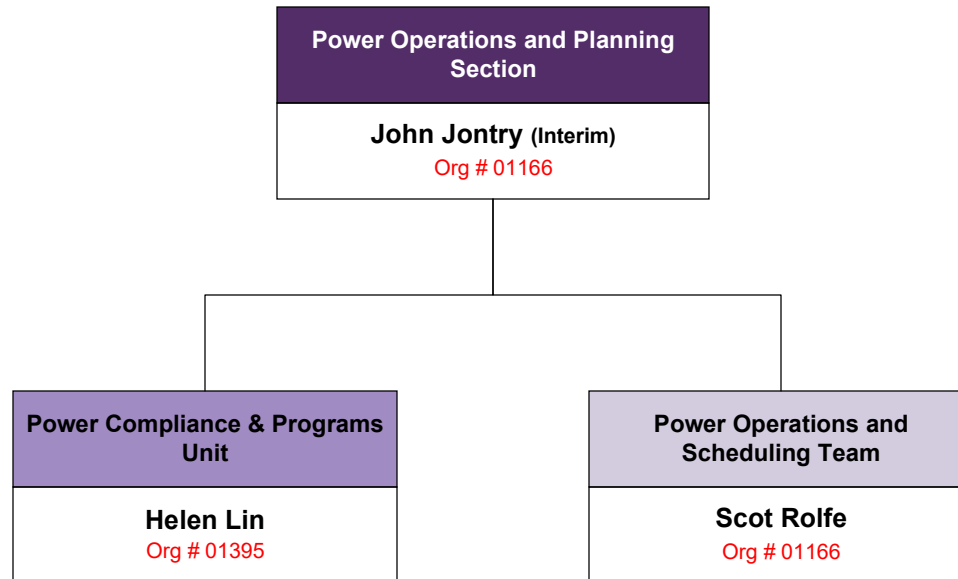
**INTEGRATED OPERATIONS, PLANNING AND SUPPORT SERVICES GROUP**  
**OPERATIONS SUPPORT SERVICES SECTION**



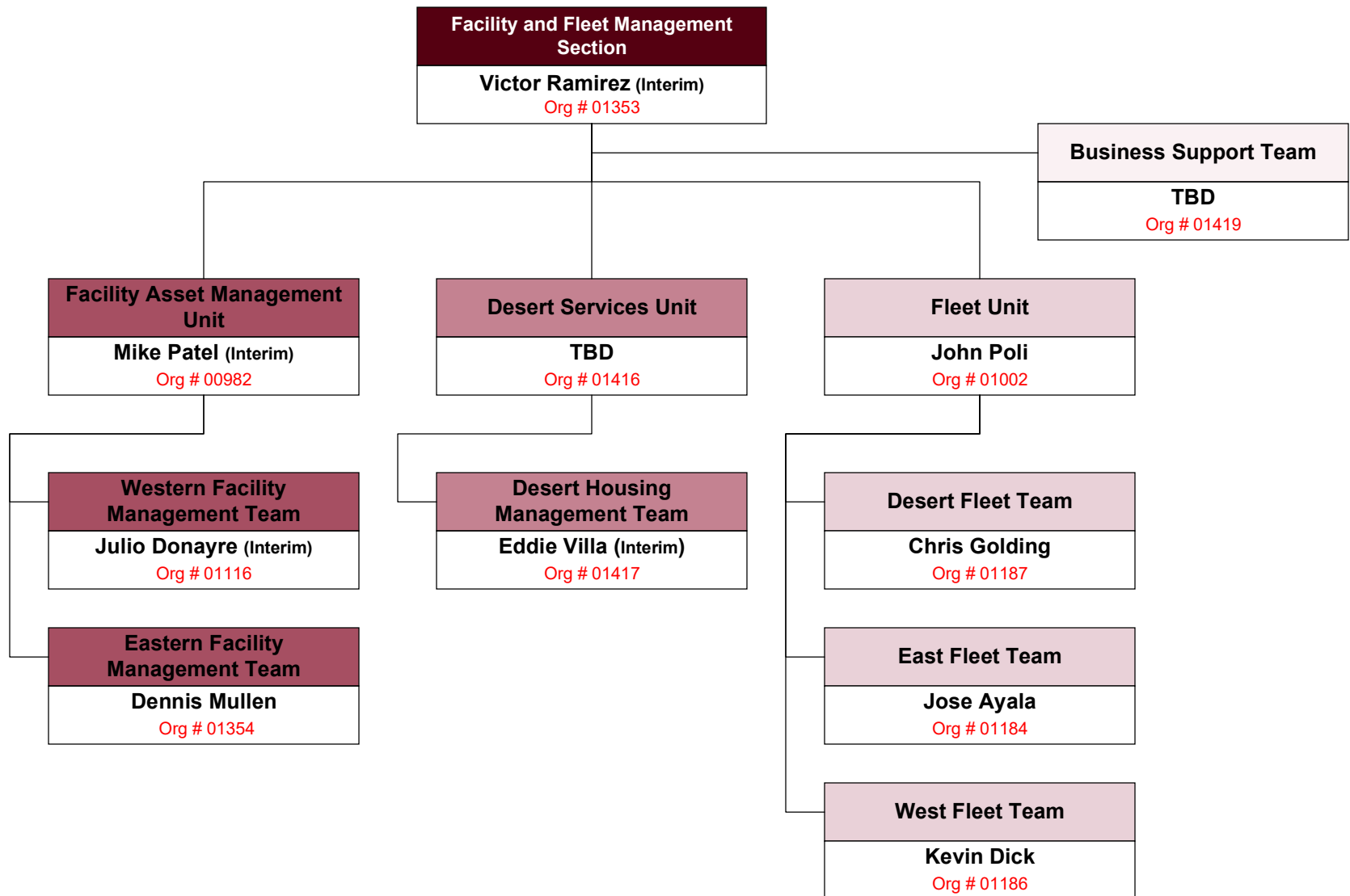
**INTEGRATED OPERATIONS, PLANNING AND SUPPORT SERVICES GROUP  
WATER OPERATIONS AND PLANNING SECTION**



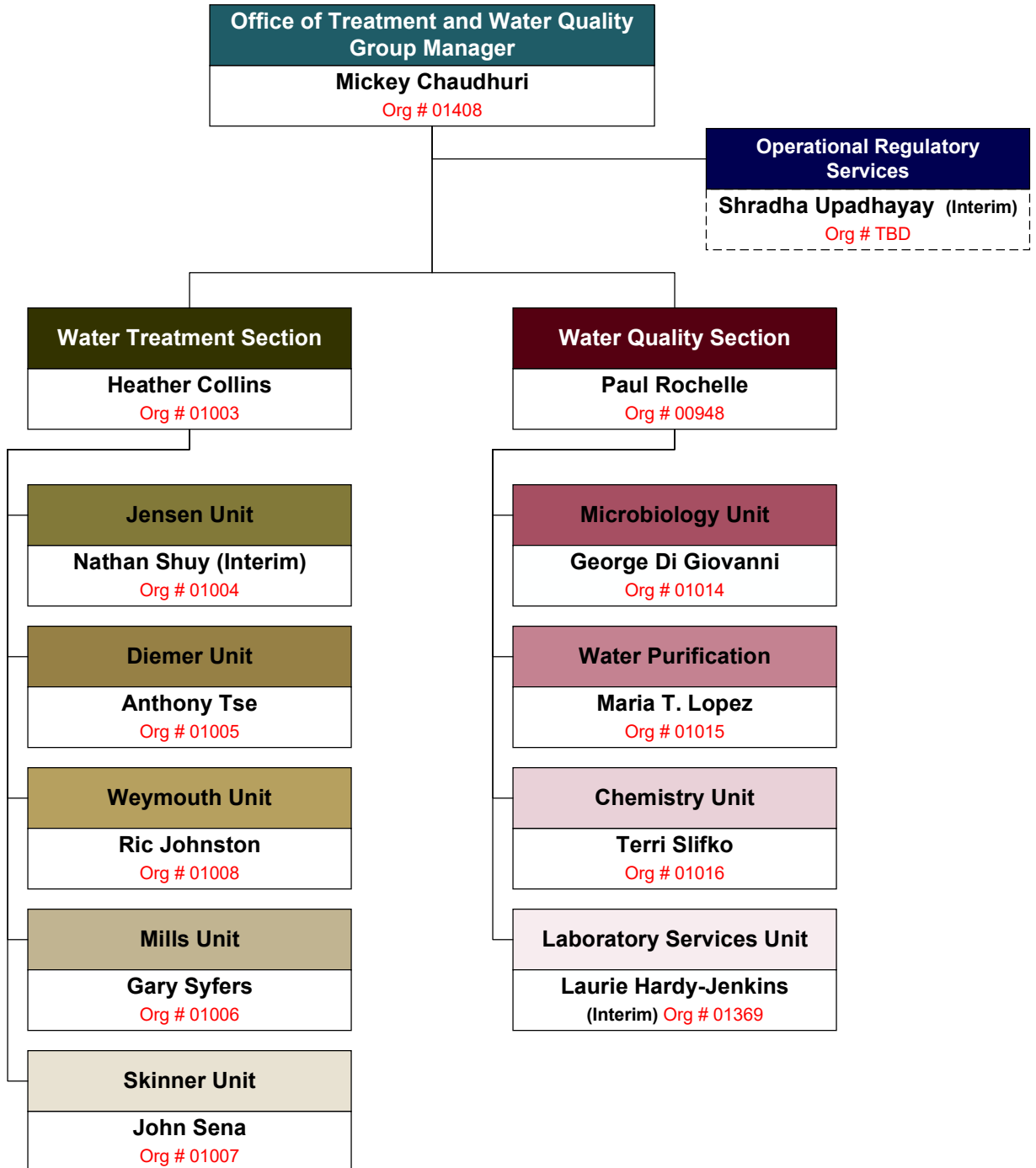
**INTEGRATED OPERATIONS, PLANNING AND SUPPORT SERVICES GROUP  
POWER OPERATIONS AND PLANNING SECTION**



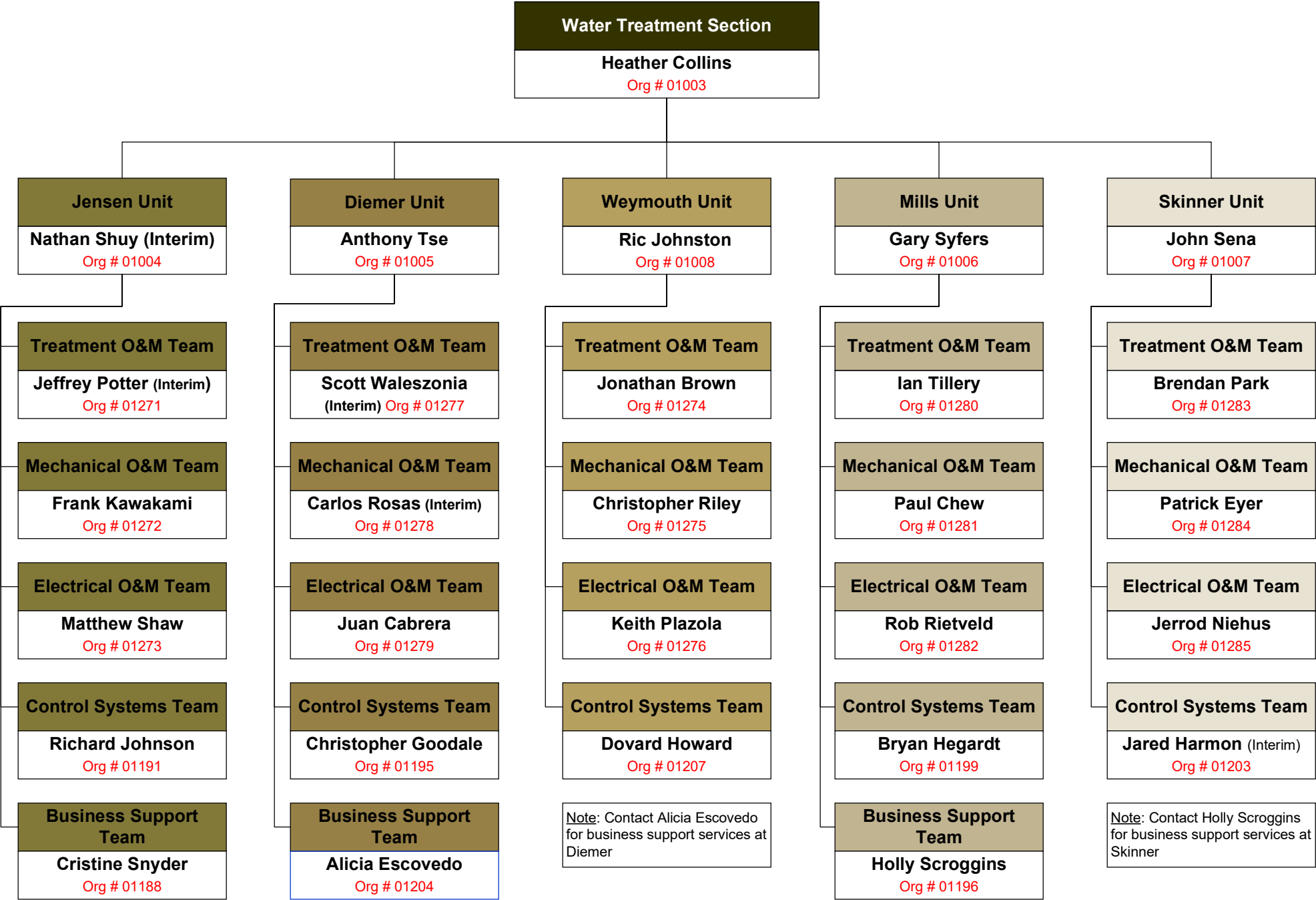
**INTEGRATED OPERATIONS, PLANNING AND SUPPORT SERVICES GROUP  
FACILITY AND FLEET MANAGEMENT SECTION**



## TREATMENT AND WATER QUALITY GROUP (01407)

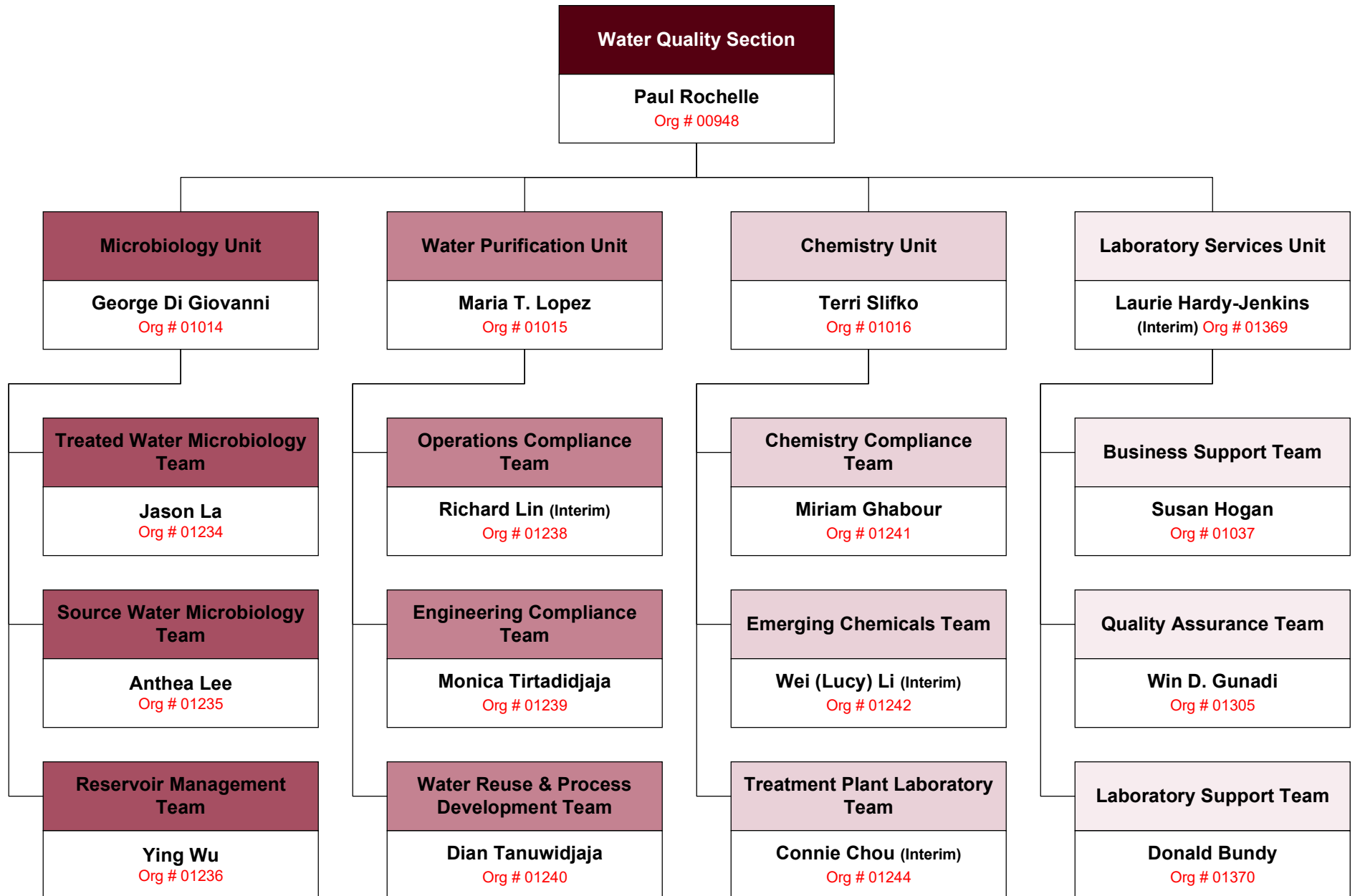


TREATMENT AND WATER QUALITY GROUP  
WATER TREATMENT SECTION



# TREATMENT AND WATER QUALITY GROUP

## WATER QUALITY SECTION







# Water Resource Management

